

CUT / FILL VOLUME	
CUT	92.92 m ³
FILL	7,832.19 m ³

CUT/FILL TABLE			
Number	Minimum Depth (m)	Maximum Depth (m)	Colour
1	-0.27	0.10	Red
2	0.10	0.30	Dark Orange
3	0.30	0.50	Orange
4	0.50	0.60	Light Orange
5	0.60	0.80	Yellow-Orange
6	0.80	0.90	Yellow
7	0.90	1.00	Light Yellow
8	1.00	2.00	Very Light Yellow

- COORDINATES IN TERMS OF HAWKES BAY CIRCUIT 2000
- DATUM IS RL'S TERM OF HAWKES BAY LOCAL AUTHORITY DATUM 1972 (NAPIER VERTICAL DATUM 1962 +10m) AND NCC2014 BENCHMARK NETWORK

LEGEND	
	KERB AND CHANNEL
	TREE

REV	REASON FOR ISSUE	DATE	BY
5	AS-BUILT PLAN	14/10/21	MC
4	RFI ENGINEERING APPROVAL	16/06/20	MC
3	RFI ENGINEERING APPROVAL	12/05/20	MC
2	FOR ENGINEERING APPROVAL	13/02/20	MC
1	FOR RESOURCE CONSENT	11/7/19	MC

stratagroup
CONSULTING ENGINEERS

P 06 876 7646
F 06 876 7645
www.stratagroup.net.nz

PO BOX 758
Business HQ
1/308 Queen Street East
Hastings, New Zealand

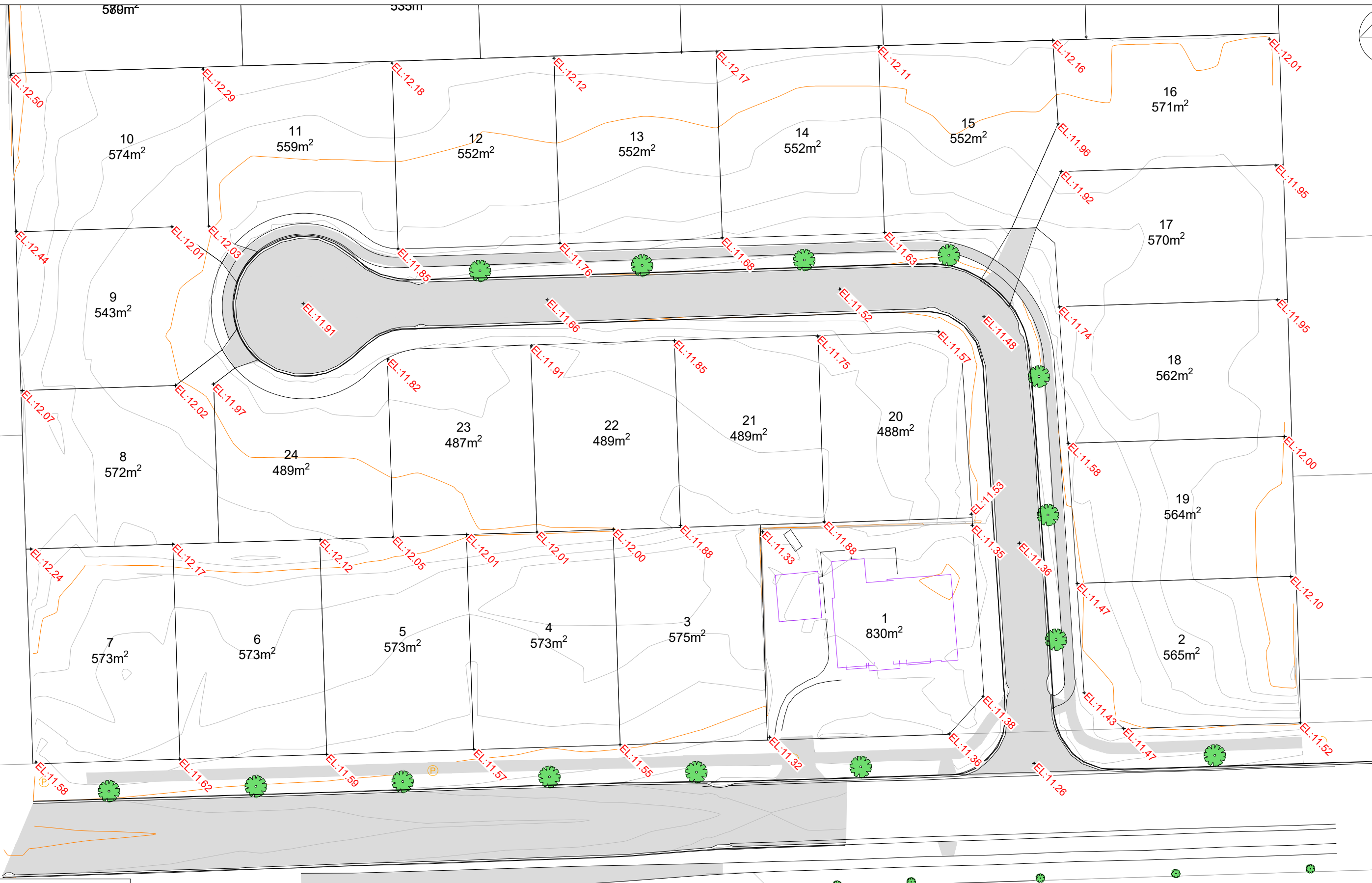
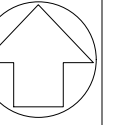
Structural Fire Civil Project Management

CLIENT: GREENSTONE LAND DEVELOPMENT LTD

PROJECT: TE AWA - KENNY ROAD

TITLE: AS-BUILT DEPTH OF FILL PLAN

DESIGNED MC	0 2.5 5 10 15
DRAWN MC	A1 1:250 ; A3 1:500
CHECKED DJ	Scale (m)
DATE 26/6/19	
PROJECT NO. J5174	SHEET: AB006
	REVISION: 5



LEGEND	
	KERB AND CHANNEL
	TREE

- COORDINATES IN TERMS OF HAWKES BAY CIRCUIT 2000
- DATUM IS RL'S TERM OF HAWKES BAY LOCAL AUTHORITY DATUM 1972 (NAPIER VERTICAL DATUM 1962 +10m) AND NCC2014 BENCHMARK NETWORK

REV	REASON FOR ISSUE	DATE	BY
5	AS-BUILT PLAN	14/10/21	MC
4	RFI ENGINEERING APPROVAL	16/06/20	MC
3	RFI ENGINEERING APPROVAL	12/05/20	MC
2	FOR ENGINEERING APPROVAL	13/02/20	MC
1	FOR RESOURCE CONSENT	11/1/19	MC

stratagroup
CONSULTING ENGINEERS

P 06 876 7646
F 06 876 7645
www.stratagroup.net.nz

PO BOX 758
Business HQ
1/308 Queen Street East
Hastings, New Zealand

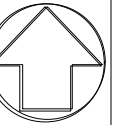
Structural Fire Civil Project Management

CLIENT: GREENSTONE LAND DEVELOPMENT LTD

PROJECT: TE AWA - KENNY ROAD

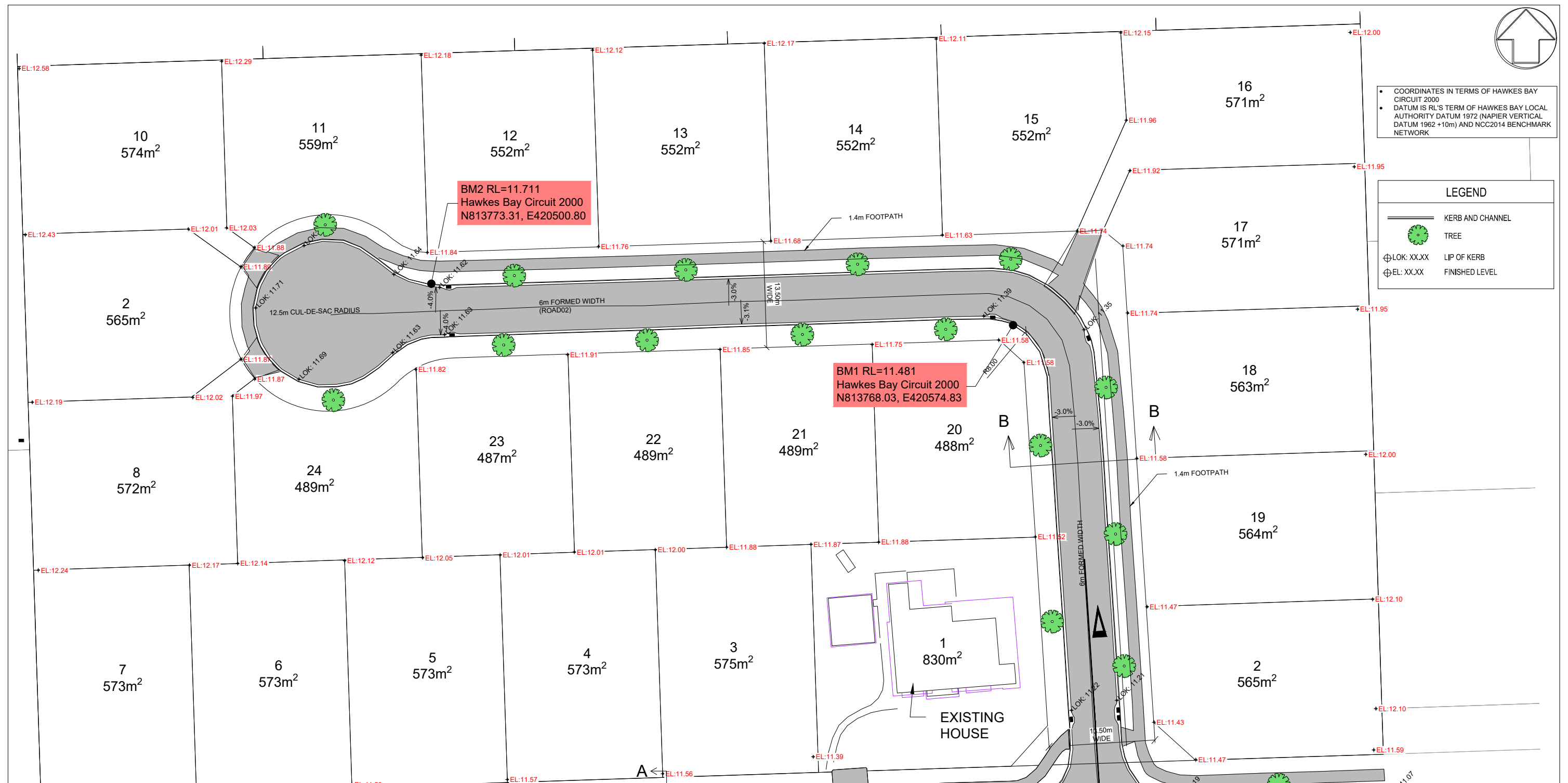
TITLE: FINISHED CONTOURS PLAN

DESIGNED MC	0 2.5 5 10 15
DRAWN MC	A1 1:250 ; A3 1:500
CHECKED DJ	Scale (m)
DATE 26/6/19	
PROJECT NO. J5174	SHEET AB007
	REVISION: 5



• COORDINATES IN TERMS OF HAWKES BAY CIRCUIT 2000
 • DATUM IS RL'S TERM OF HAWKES BAY LOCAL AUTHORITY DATUM 1972 (NAPIER VERTICAL DATUM 1962 +10m) AND NCC2014 BENCHMARK NETWORK

LEGEND	
	KERB AND CHANNEL
	TREE
	LIP OF KERB
	FINISHED LEVEL



BM1 RL=11.481
 Hawkes Bay Circuit 2000
 N813768.03, E420574.83

BM2 RL=11.711
 Hawkes Bay Circuit 2000
 N813773.31, E420500.80

STORMWATER ROAD SUMP SCHEDULE

MANHOLE ID	CENTRE OF MANHOLE			DESCRIPTION
	mN	mE	Lid RL (m)	
SUMP11	813772.8884	420503.0077	11.5783	SINGLE ROAD SUMP
SUMP12	813766.8132	420503.4381	11.5629	SINGLE ROAD SUMP
SUMP13	813766.3823	420584.4267	11.3030	SINGLE ROAD SUMP
SUMP14	813769.0464	420572.2493	11.3511	SINGLE ROAD SUMP
SUMP15	813717.9041	420582.2569	11.1785	SINGLE ROAD SUMP
SUMP16	813719.0954	420588.2070	11.1567	DOUBLE ROAD SUMP

ROAD SURFACING AS FOLLOWS:
 • 25MM M10 ASPHALTIC CONCRETE OVER WATERPROOFING MEMBRANE SEAL COAT

PAVEMENT:
 • 150MM TNZ M4 AP40 BASECOURSE METAL
 • 300MM GAP65 METAL SUBBASE

BERMS:
 • 150MM TOPSOIL FREE OF STONES, FOREIGN MATTER & WEEDS
 • BERMS SHALL BE MECHANICALLY TILLED AND LIGHTLY ROLLED PRIOR TO GRASSING
 • *SWARD COVERAGE OF NOT LESS THAN 90% WITHIN 1 MONTH OF SOWING* (NZS 4404)

FOOTPATH:
 • 100MM CONCRETE WITH "U5" (NZS 3114) LIGHT BROOM FINISH
 • SAWCUT OR CONSTRUCTION JOINTS AT 5M CENTERS
 • 100MM MIN COMPACTED AND SATURATED M4 BASECOURSE. BASECOURSE COMPACTED TO CIV = +25 TO BE WITNESSED BY NCC TRANSPORTATION ENGINEER

REV	REASON FOR ISSUE	DATE	BY
5	AS-BUILT	14/10/21	MC
4	RFI ENGINEERING APPROVAL	19/06/20	MC
3	RFI ENGINEERING APPROVAL	12/05/20	MC
2	FOR ENGINEERING APPROVAL	13/02/20	MC
1	FOR RESOURCE CONSENT	11/7/19	MC

stratagroup
 CONSULTING ENGINEERS

P 06 876 7646
 F 06 876 7645
 www.stratagroup.net.nz

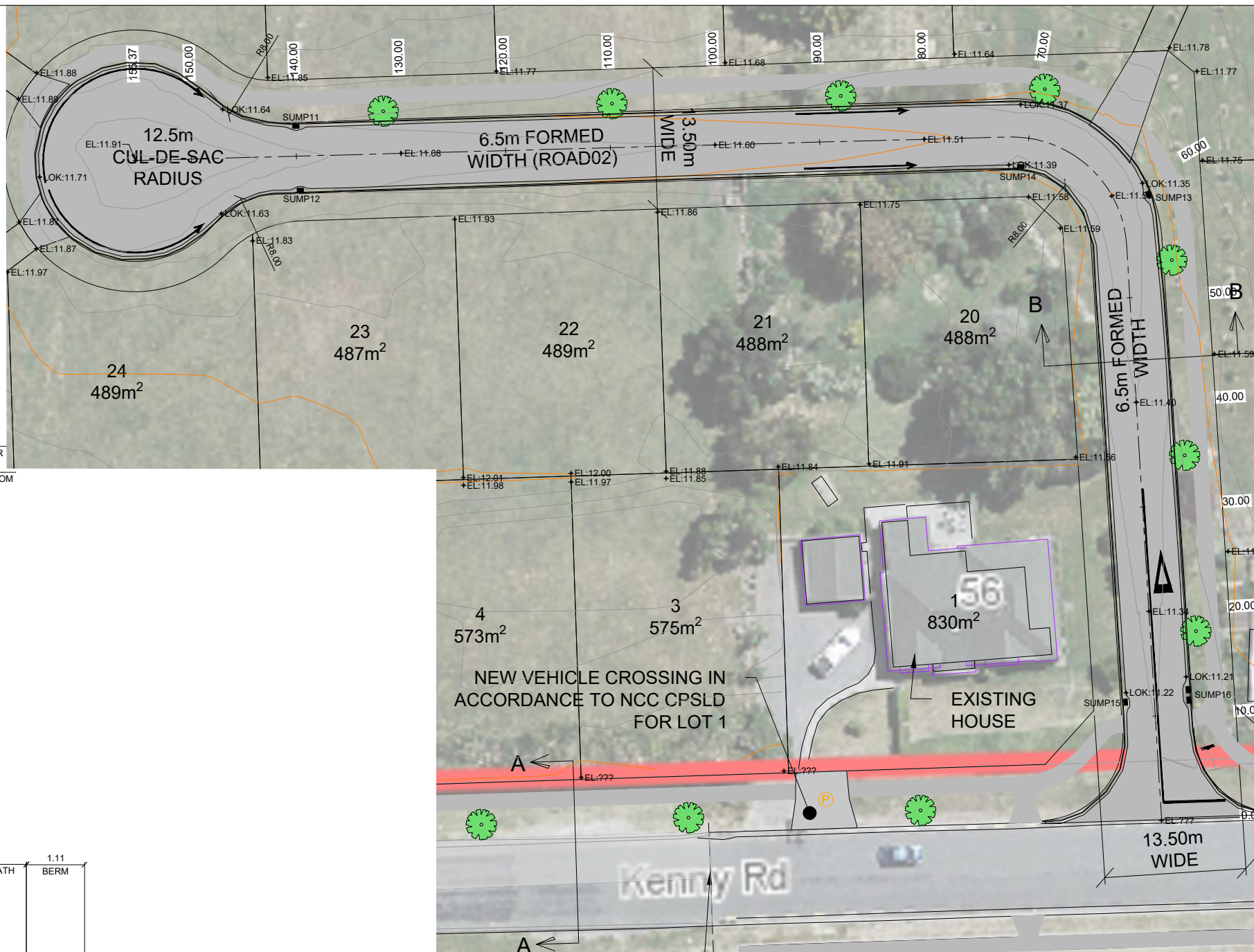
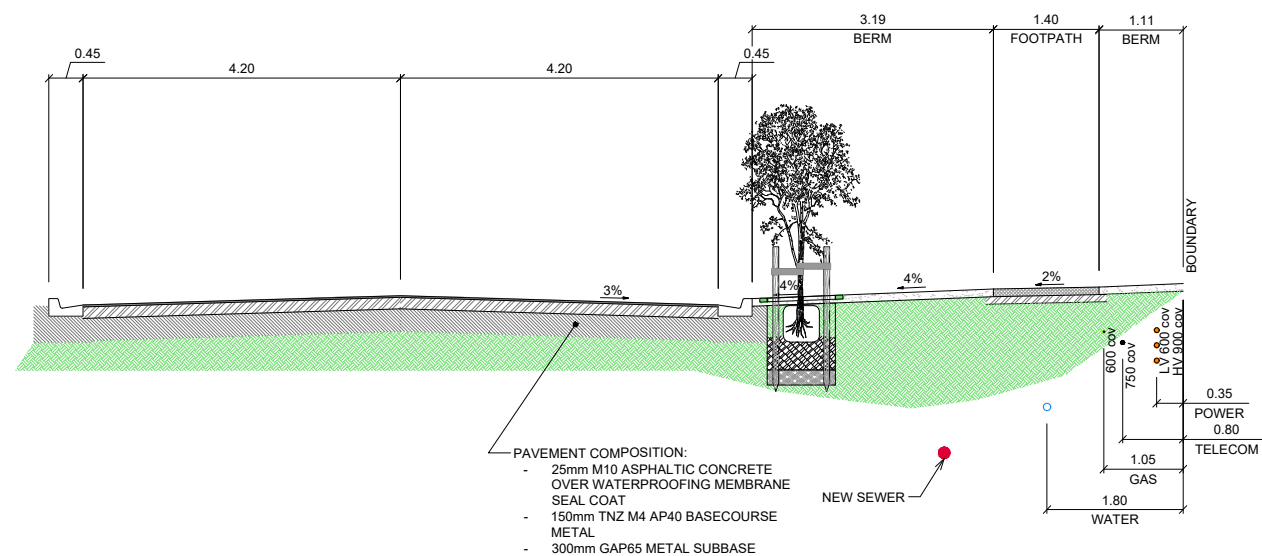
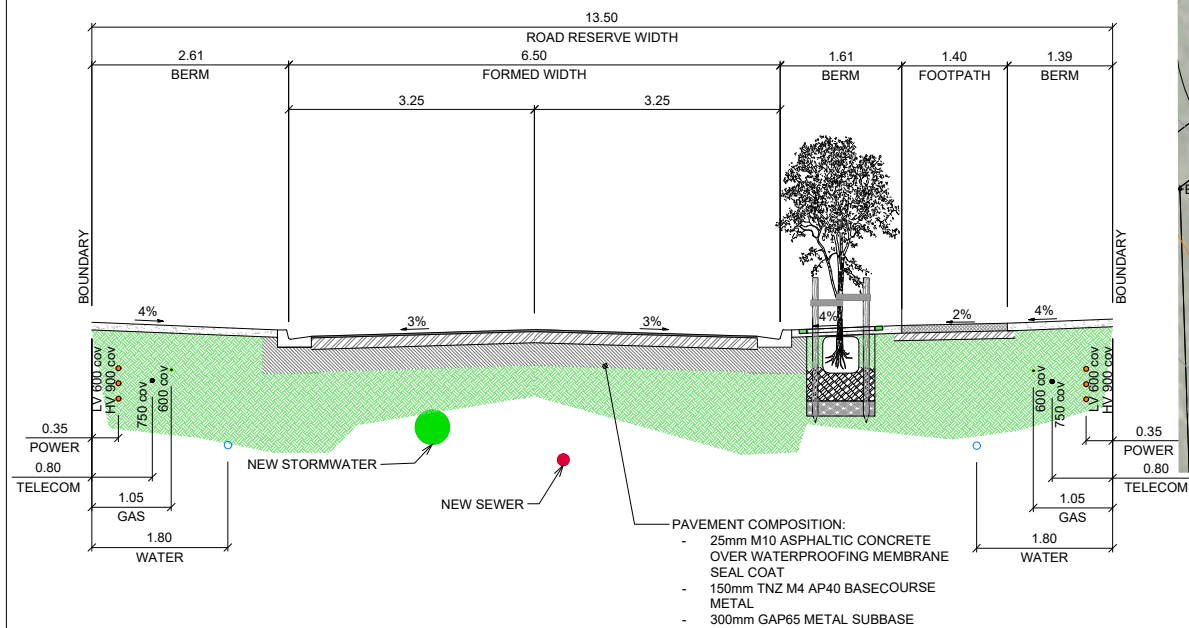
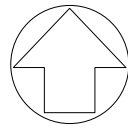
PO BOX 758
 Business HQ
 1/308 Queen Street East
 Hastings, New Zealand
 Structural Fire Civil Project Management

CLIENT: GREENSTONE LAND DEVELOPMENT LTD

PROJECT: TE AWA - KENNY ROAD

TITLE: ASBUILT ROADING LAYOUT

DESIGNED MC	0 2.5 5 10 15
DRAWN MC	A1 1:250 ; A3 1:500
CHECKED DJ	Scale (m)
DATE 26/6/19	
PROJECT NO. J5174	SHEET: AB010
	REVISION: 5



SCALE: 1:500H, 1:100V
DATUM: 8.00

HORIZONTAL GEOMETRY	L: 55.039 356° 31' 23"					L: 16.908 R: 11.000		L: 83.427 268° 27' 15"									
	AS-BUILT LEVELS	11.30	11.34	11.36	11.40	11.45	11.47	11.48	11.51	11.56	11.60	11.62	11.65	11.68	11.73	11.87	
CUT/FILL DEPTHS	0.26	0.29	0.23	0.26	0.29	0.35	0.25	0.28	0.24	0.28	0.37	0.35	0.39	0.50	0.60		
EXISTING LEVELS	11.04	11.05	11.13	11.13	11.16	11.15	11.23	11.23	11.32	11.31	11.25	11.30	11.29	11.22	11.28		
CHAINAGE	0	10	20	30	40	50	60	70	80	90	100	110	120	130	140	150	155

ROAD02 LONG SECTION

REV	REASON FOR ISSUE	DATE	BY
5	AS BUILT PLAN	17/09/21	MC
4	RFI ENGINEERING APPROVAL	19/06/20	MC
3	RFI ENGINEERING APPROVAL	12/05/20	MC
2	FOR ENGINEERING APPROVAL	13/02/20	MC
1	FOR RESOURCE CONSENT	11/1/19	MC

stratagroup
CONSULTING ENGINEERS

P 06 876 7646
F 06 876 7645
www.stratagroup.net.nz

PO BOX 758
Business HQ
1/308 Queen Street East
Hastings, New Zealand

Structural Fire Civil Project Management

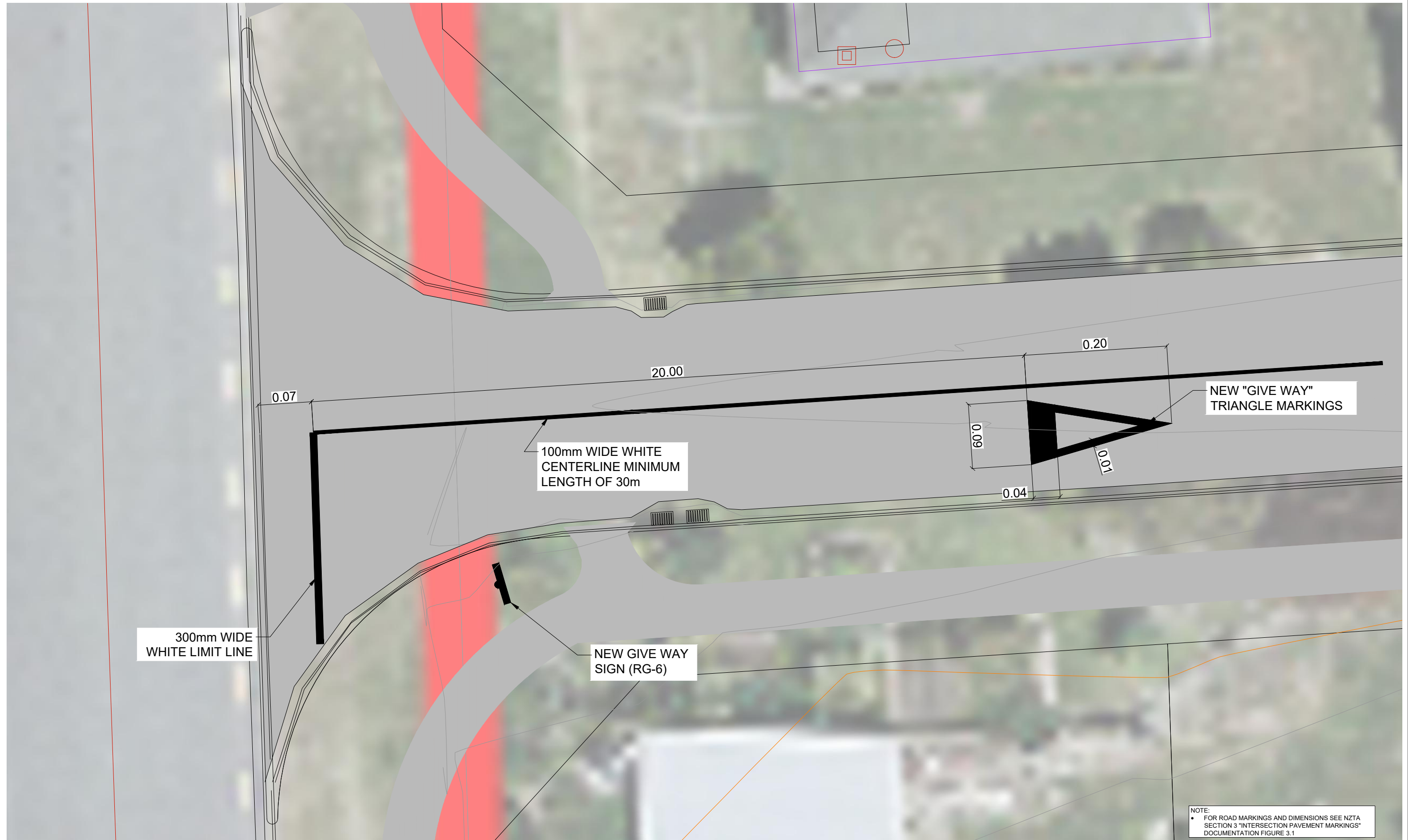
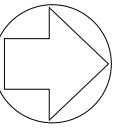
CLIENT: GREENSTONE LAND DEVELOPMENT LTD

PROJECT: TE AWA - KENNY ROAD

TITLE: PROPOSED ROADING ROAD02 LONG SECTION CROSS SECTION

DESIGNED MC
DRAWN MC
CHECKED DJ
DATE 26/6/19

PROJECT NO.: J5174
SHEET: AB011
REVISION: 5



NOTE:
 • FOR ROAD MARKINGS AND DIMENSIONS SEE NZTA SECTION 3 "INTERSECTION PAVEMENT MARKINGS" DOCUMENTATION FIGURE 3.1

REV	REASON FOR ISSUE	DATE	BY
5	AS BUILT PLAN	14/10/21	MC
4	RFI ENGINEERING APPROVAL	19/06/20	MC
3	RFI ENGINEERING APPROVAL	12/05/20	MC
2	FOR ENGINEERING APPROVAL	13/02/20	MC
1	FOR RESOURCE CONSENT	11/7/19	MC

stratagroup
 CONSULTING ENGINEERS
 P 06 876 7646 PO BOX 758
 F 06 876 7645 Business HQ
 www.stratagroup.net.nz 1/308 Queen Street East
 Hastings, New Zealand
 Structural Fire Civil Project Management

CLIENT: GREENSTONE LAND DEVELOPMENT LTD

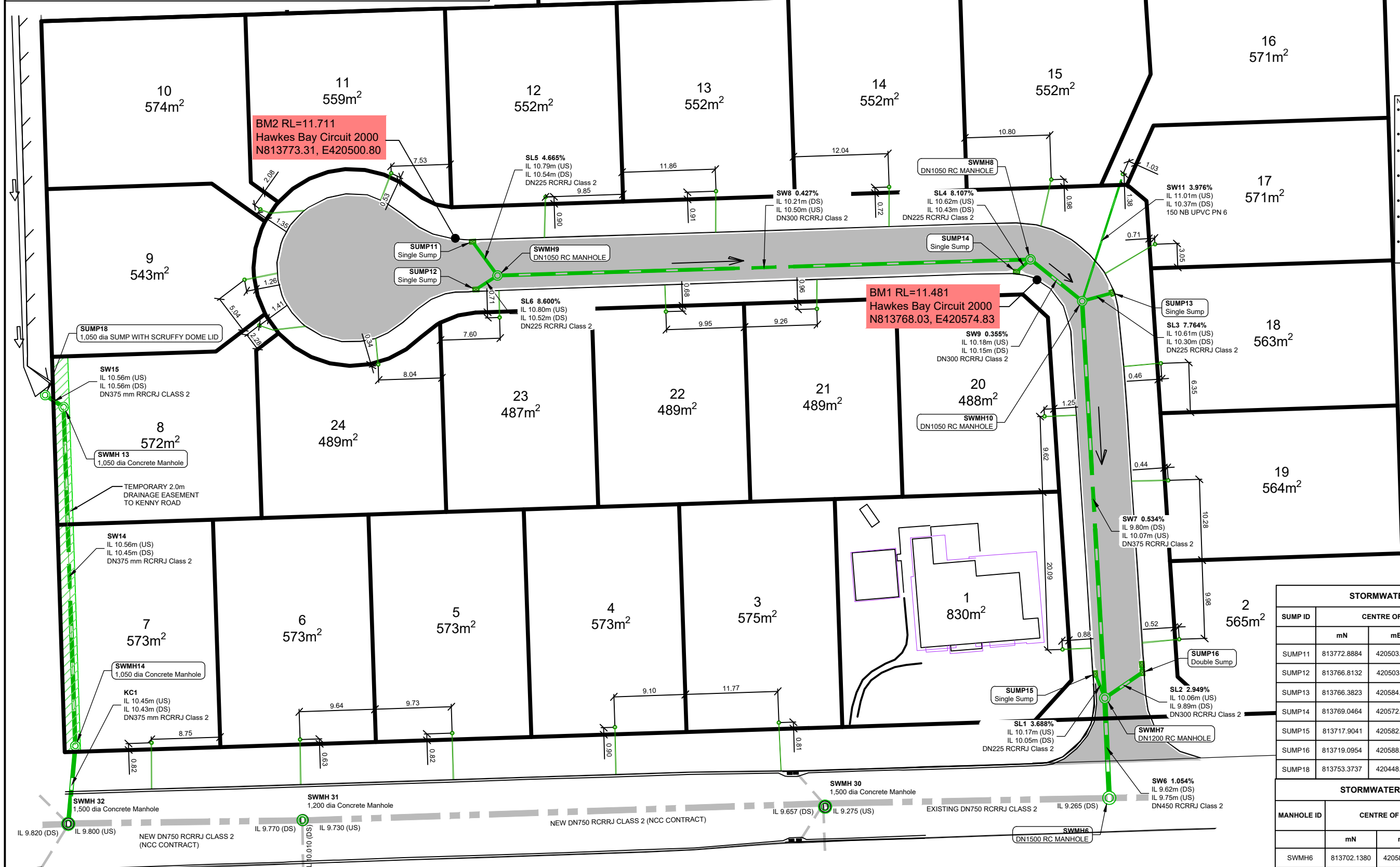
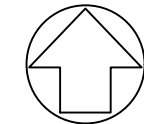
PROJECT: TE AWA - KENNY ROAD

TITLE: PROPOSED ROAD SIGNS AND MARKINGS

DESIGNED MC	0 2.5 5 10 15
DRAWN MC	A1 1:250 ; A3 1:500
CHECKED DJ	Scale (m)
DATE 26/6/19	
PROJECT NO. J5174	SHEET: AB012
	REVISION: 5

This drawing and its contents are the property of Strata Group Consulting Engineers Ltd. Any unauthorized employment or reproduction in full or part is forbidden.

SURVEY DATUM: NZGD2000, HAWKES BAY CIRCUIT
 HEIGHT DATUM: HAWKES BAY LOCAL AUTHORITY DATUM 1972 (NAPIER VERTICAL DATUM 1962 +10m) AND NCC 2014 BENCHMARK NETWORK
 HEIGHT ORIGIN: BOLT 10, GEODETIC CODE: EVQ6, RL=11.208m, SOURCE: LINZ



- NOTES:
- ALL NEW MANHOLES ARE DN1050 REINFORCED CONCRETE UNLESS OTHERWISE NOTED
 - ALL NEW MANHOLES HAVE 200mm THICK HEAVY DUTY CLASS D CONCRETE LID
 - ALL NEW MANHOLES HAVE HYANDES TWINO AS3996 CLASS E400 HEAVY DUTY IRON FRAME AND COVER
 - ROAD SUMP HAS A DN600 REINFORCED CONCRETE PIT WITH A CLASS D 580x350 HYDRO CONCAVE GRATE AND FRAME
 - LOT CONNECTIONS FOR LOT1-24 ARE ALL DN150 uPVC SNI16
 - LOTS 1-15, 17-24 HAVE A 75x100x3MM RHS KERB CONNECTIONS WHEREAS LOT 16 DIRECTLY TO NEW DN1050 MANHOLE
 - ALL CONSTRUCTION INFORMATION FOR LOTS 1-24 BY SANTO DRAINAGE & CONTRACTING LTD

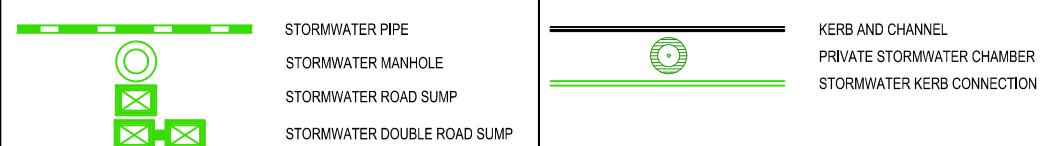
STORMWATER SUMP SCHEDULE

SUMP ID	CENTRE OF SUMP			DESCRIPTION
	mN	mE	Lid RL (m)	
SUMP11	813772.8884	420503.0077	11.5783	SINGLE ROAD SUMP
SUMP12	813766.8132	420503.4381	11.5629	SINGLE ROAD SUMP
SUMP13	813766.3823	420584.4267	11.3030	SINGLE ROAD SUMP
SUMP14	813769.0464	420572.2493	11.3511	SINGLE ROAD SUMP
SUMP15	813717.9041	420582.2569	11.1785	SINGLE ROAD SUMP
SUMP16	813719.0954	420588.2070	11.1567	DOUBLE ROAD SUMP
SUMP18	813753.3737	420448.6146	11.3701	DN1050 SUMP WITH SCRUFFY DOME LID

STORMWATER MANHOLE SCHEDULE

MANHOLE ID	CENTRE OF MANHOLE			DESCRIPTION
	mN	mE	Lid RL (m)	
SWMH6	813702.1380	420584.0473	11.297	DN 1500 RC MANHOLE
SWMH7	813714.8396	420583.4832	11.258	DN 1200 RC MANHOLE
SWMH8	813770.6379	420574.0214	11.447	DN 1050 RC MANHOLE
SWMH9	813768.5832	420506.1847	11.665	DN 1050 RC MANHOLE
SWMH10	813765.3254	420580.6017	11.451	DN 1050 RC MANHOLE
SWMH13	813751.8470	420450.9557	12.282	DN 1050 RC MANHOLE
SWMH14	813708.7592	420452.4511	11.271	DN 1050 RC MANHOLE

LEGEND



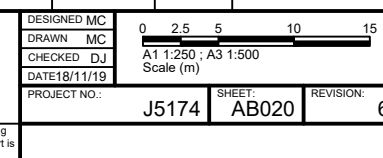
REV	REASON FOR ISSUE	DATE	BY
6	AS-BUILT	14/10/21	MC
5	RFI ENGINEERING APPROVAL	29/05/20	MC
4	RFI ENGINEERING APPROVAL	19/05/20	MC
3	RFI ENGINEERING APPROVAL	13/05/20	MC
2	FOR ENGINEERING APPROVAL	17/02/20	MC
1	FOR RESOURCE CONSENT	18/11/19	MC

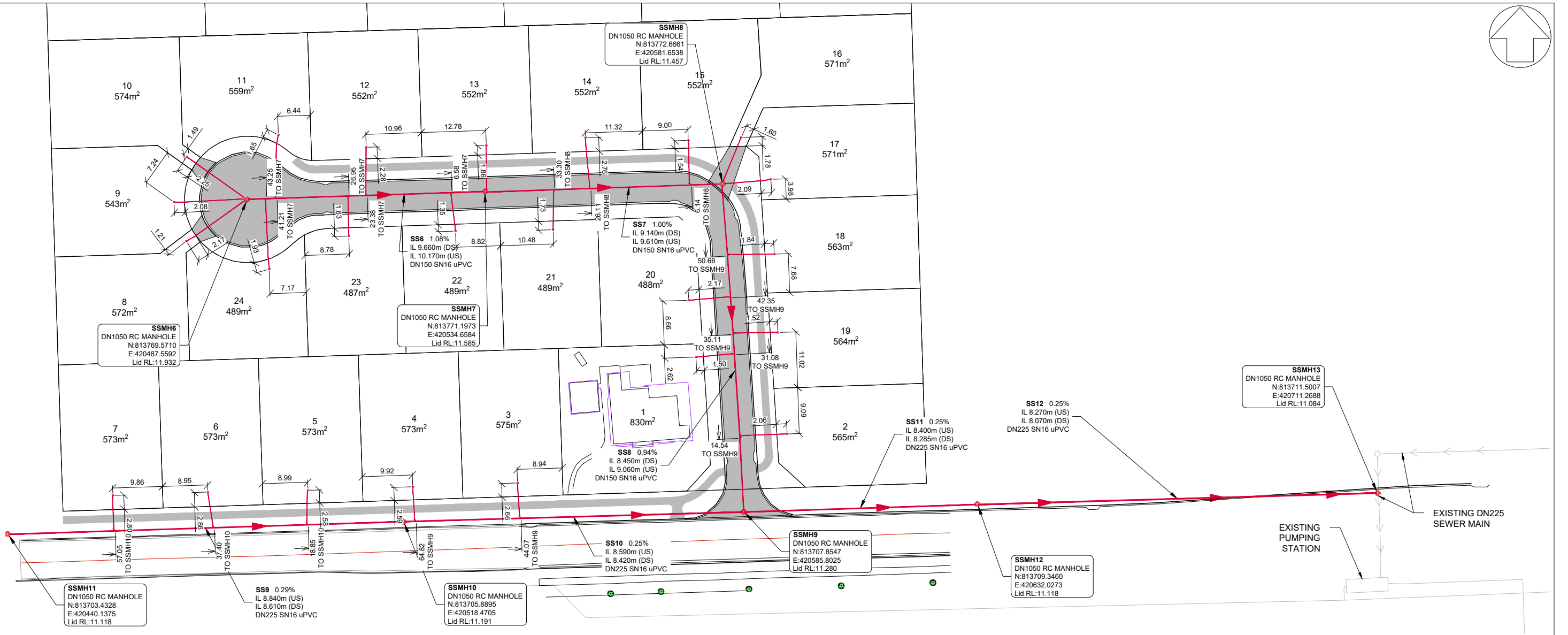
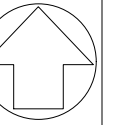
stratagroup
 CONSULTING ENGINEERS
 P 06 876 7646
 F 06 876 7645
 www.stratagroup.net.nz
 PO BOX 758
 Business HQ
 1/308 Queen Street East
 Hastings, New Zealand
 Structural Fire Civil Project Management

CLIENT: GREENSTONE LAND DEVELOPMENT LTD
 PROJECT: TE AWA - KENNY ROAD

TITLE: AS-BUILT STORMWATER LAYOUT

DESIGNED MC
 DRAWN MC
 CHECKED DJ
 DATE 18/11/19
 PROJECT NO.: J5174
 SHEET: AB020
 REVISION: 6

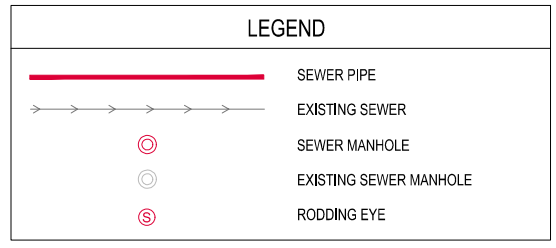




- NOTES:**
- ALL NEW MANHOLES ARE DN1050 REINFORCED CONCRETE
 - ALL NEW MANHOLES HAVE 200mm THICK HEAVY DUTY CLASS D CONCRETE LID
 - ALL NEW MANHOLES HAVE HYANDS TWINO AS3996 CLASS E400 HEAVY DUTY IRON FRAME AND COVER
 - LOT CONNECTIONS FOR LOT1-24 ARE ALL DN100 uPVC SN16
 - LOTS 1-7, 11-12, 14-15, 18-24 HAVE A DN150 BY 100 PVC WYE JUNCTION INTO MAIN WHEREAS LOTS 8-10, 13, 16-17 DIRECTLY TO NEW DN1050 MANHOLE
 - SSMH (EXISTING) MAIN CONNECTION WAS PERFORMED BY NCC
 - ALL CONSTRUCTION INFORMATION FOR LOTS 1-24 BY SANTO DRAINAGE & CONTRACTING LTD

SURVEY DATUM: NZGD2000, HAWKES BAY CIRCUIT
 HEIGHT DATUM: HAWKES BAY LOCAL AUTHORITY DATUM 1972 (NAPIER VERTICAL DATUM 1962 +10m) AND NCC 2014 BENCHMARK NETWORK
 HEIGHT ORIGIN: BOLT 10, GEODETIC CODE: EVQ6, RL=11.208m, SOURCE: LINZ

MANHOLE SET OUT SCHEDULE				
MANHOLE ID	CENTRE OF MANHOLE			DESCRIPTION
	mN	mE	Lid RL (m)	
SSMH6	813769.5710m	813769.5710m	11.932m	NEW DN 1050 RC MANHOLE
SSMH7	813771.1973m	420534.6584m	11.585m	NEW DN 1050 RC MANHOLE
SSMH8	813772.6661m	420581.6538m	11.457m	NEW DN 1050 RC MANHOLE
SSMH9	813707.8547m	420585.8025m	11.280m	NEW DN 1050 RC MANHOLE
SSMH10	813705.8895m	420518.4705m	11.191m	NEW DN 1050 RC MANHOLE
SSMH11	813703.4328m	420440.1375m	11.118m	NEW DN 1050 RC MANHOLE
SSMH12	813709.3460m	420632.0273m	11.118m	NEW DN 1050 RC MANHOLE
SSMH13	813711.5007m	420711.2688m	11.084m	NEW DN 1050 RC MANHOLE



REV	REASON FOR ISSUE	DATE	BY
6	AS-BUILT	19/06/21	MC
5	AMENDMENT OF SEWER LAYOUT	4/11/20	MC
4	RFI ENGINEERING APPROVAL	19/06/20	MC
3	RFI ENGINEERING APPROVAL	13/05/20	MC
2	FOR ENGINEERING APPROVAL	18/2/20	MC
1	FOR RESOURCE CONSENT	11/7/19	MC

stratagroup
 CONSULTING ENGINEERS

P 06 876 7646
 F 06 876 7645
 www.stratagroup.net.nz

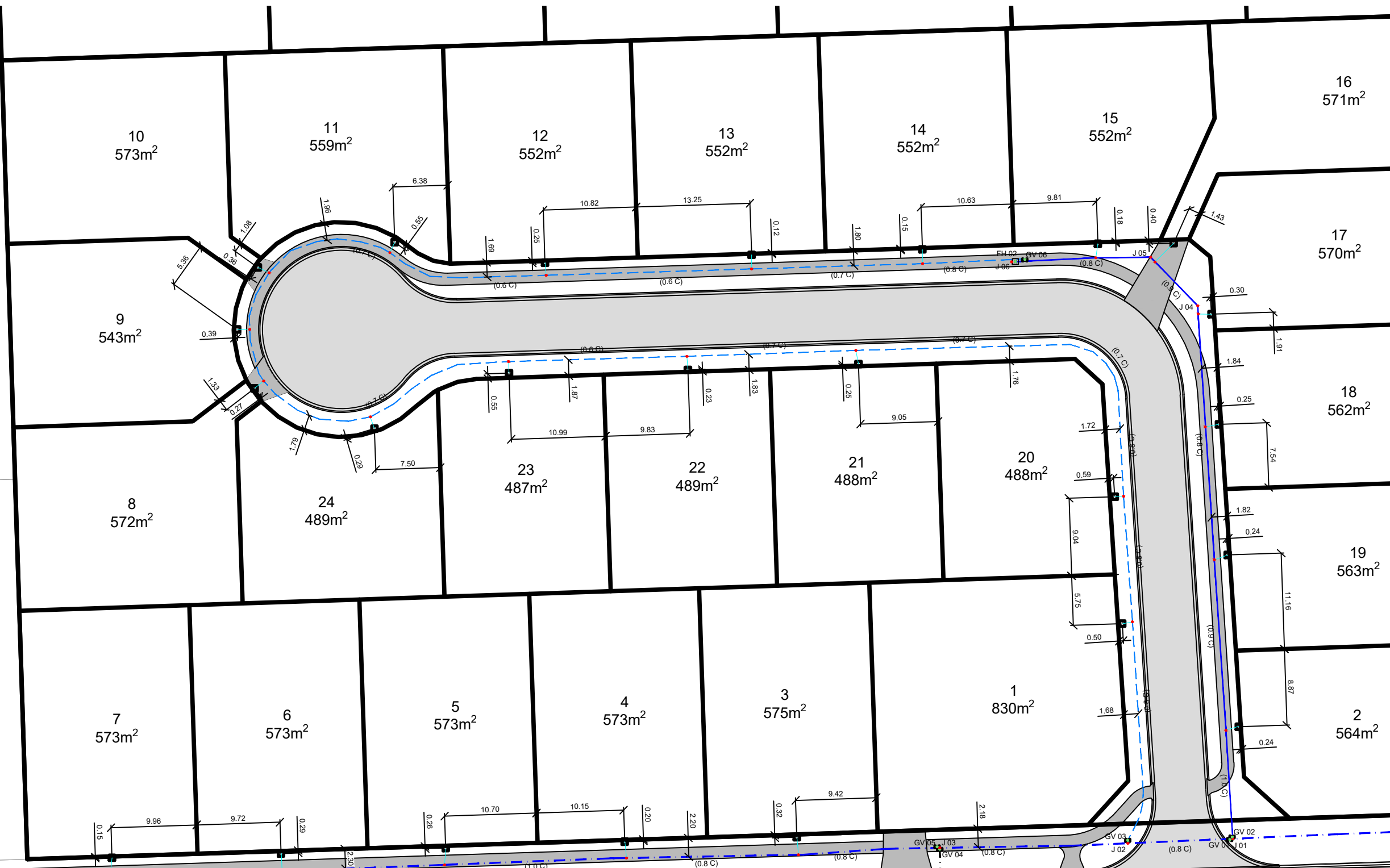
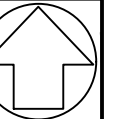
PO BOX 758
 Business HQ
 1/308 Queen Street East
 Hastings, New Zealand
 Civil Project Management

CLIENT: GREENSTONE LAND DEVELOPMENT LTD

PROJECT: TE AWA - KENNY ROAD

TITLE: AS-BUILT WASTE WATER LAYOUT

DESIGNED MC	0 4 8 16 24
DRAWN MC	Full Size 1:400 ; Half Size 1:800
CHECKED DJ	Scale (m)
DATE 26/6/19	
PROJECT NO. J5174	SHEET: AB030
	REVISION: 5



LOT MANIFOLDS			
	mN	mE	RL (m)
LOT 1	813735.3807m	420578.5499m	11.3815m
LOT 2	813723.3846m	420592.1170m	11.4653m
LOT 3	813710.5301m	420540.6668m	11.4586m
LOT 4	813710.0057m	420520.6406m	11.5267m
LOT 5	813709.2733m	420499.8031m	11.5565m
LOT 6	813708.6237m	420480.6354m	11.6347m
LOT 7	813708.1331m	420460.9628m	11.3724m
LOT 8	813762.7709m	420477.5572m	11.8531m
LOT 9	813769.6271m	420475.5217m	11.9056m
LOT 10	813776.8472m	420477.9425m	11.8665m
LOT 11	813779.7825m	420493.8684m	11.8266m
LOT 12	813777.3936m	420511.3622m	11.8616m
LOT 13	813778.3164m	420535.4116m	11.7062m
LOT 14	813778.9499m	420555.2836m	11.6131m
LOT 15	813779.6007m	420575.7138m	11.6793m
LOT 16	813779.6698m	420584.5389m	11.7447m
LOT 17	813771.4034m	420588.9341m	11.6961m
LOT 18	813758.5832m	420589.8118m	11.6112m
LOT 19	813743.3822m	420590.8182m	11.5386m
LOT 20	813750.1541m	420577.6753m	11.5173m
LOT 21	813765.5969m	420547.8486m	11.7968m
LOT 22	813764.9145m	420527.9955m	11.8320m
LOT 23	813764.5417m	420507.1741m	11.8133m
LOT 24	813758.0837m	420491.5099m	11.8689m

- WATER PIPE NETWORK**
- DN100 uPVC PN 12 WATERMAIN
 - DN150 PE WATERMAIN
 - DN63 PE80 PN12.5 SDR13.6 WATER RIDER MAIN
 - DN20 PE80 PN12.5 WATER SERVICE CONNECTION PIPES
 - JUNCTION J01: DN150 X DN100 DI FLANGED TEE
 - JUNCTIONS J04 - J05: DN100 DI 45° BEND SO-SO
 - JUNCTION J03: DN150 X DN150 DI FLANGED TEE
 - ALL VALVES ARE DUCTILE IRON
 - ALL HYDRANTS ARE DUCTILE IRON
 - ALL WATER SERVICE CONNECTION TERMINALS ARE NCC STANDARD MANIFOLDS

SURVEY DATUM: NZGD2000, HAWKES BAY CIRCUIT
 HEIGHT DATUM: HAWKES BAY LOCAL AUTHORITY DATUM 1972 (NAPIER VERTICAL DATUM 1962 +10m) AND NCC 2014 BENCHMARK NETWORK
 HEIGHT ORIGIN: BOLT 10, GEODETIC CODE: EVQ6, RL=11.208m, SOURCE: LINZ

WATERLINE JUNCTIONS				
	mN	mE	RL (m)	DESCRIPTION
J 01	813710.3483m	420591.4069m	10.3930m	DN150 X DN100 DI FLANGED TEE
J 02	813709.8197m	420579.1971m	10.4780m	DN150 ELONGATED GIBBALT
J 03	813709.2941m	420557.3206m	10.4260m	DN150 X DN150 DI FLANGED TEE
J 04	813772.3768m	420587.3393m	10.6593m	DN100 45° BEND
J 05	813778.0349m	420581.8591m	10.6874m	DN100 45° BEND
J 06	813777.4918m	420565.6633m	11.5573m	DN100 END CAP
J 07	813705.9666m	420451.4764m	10.5290m	DN150 END CAP

HYDRANTS AND VALVES			
	mN	mE	RL (m)
FH 01	813706.0021m	420451.9246m	11.2694m
FH 02	813777.5273m	420566.1115m	11.5573m
GV 01 (150)	813710.2537m	420591.0609m	11.2887m
GV 02 (100)	813710.5604m	420591.3350m	11.3130m
GV 03 (50)	813710.1700m	420579.1900m	11.3624m
GV 04 (150)	813709.1232m	420557.3131m	11.3053m
GV 05 (150)	813709.4168m	420556.9969m	11.3030m
GV 06 (50)	813777.7288m	420567.2021m	11.5616m

REV	REASON FOR ISSUE	DATE	BY
5	AS-BUILT PLAN	25/08/21	MC
4	RFI ENGINEERING APPROVAL	16/06/20	MC
3	RFI ENGINEERING APPROVAL	12/05/20	MC
2	FOR ENGINEERING APPROVAL	13/02/20	MC
1	FOR RESOURCE CONSENT	11/1/19	MC

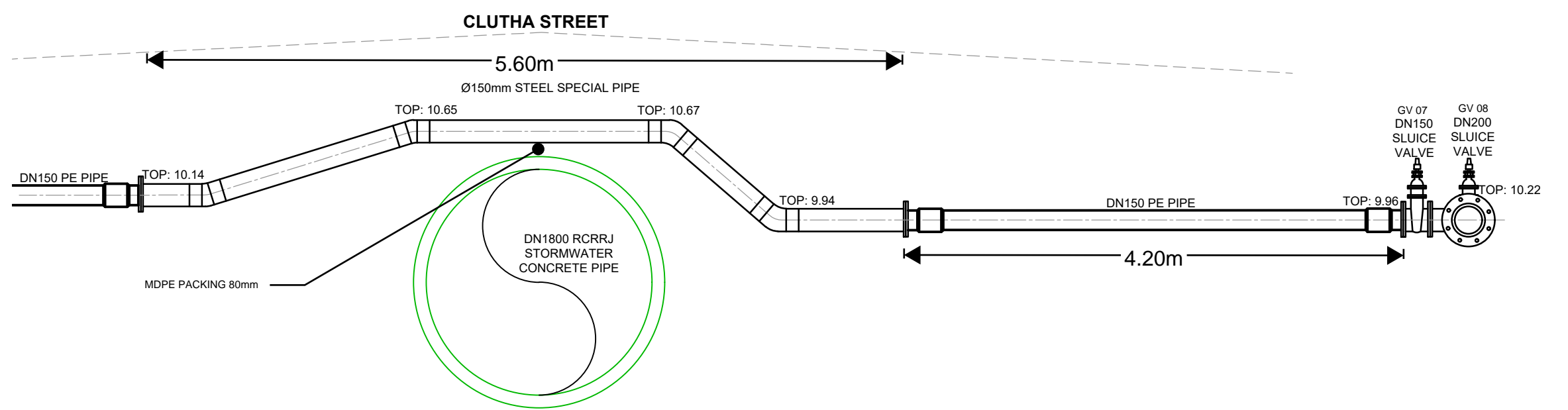
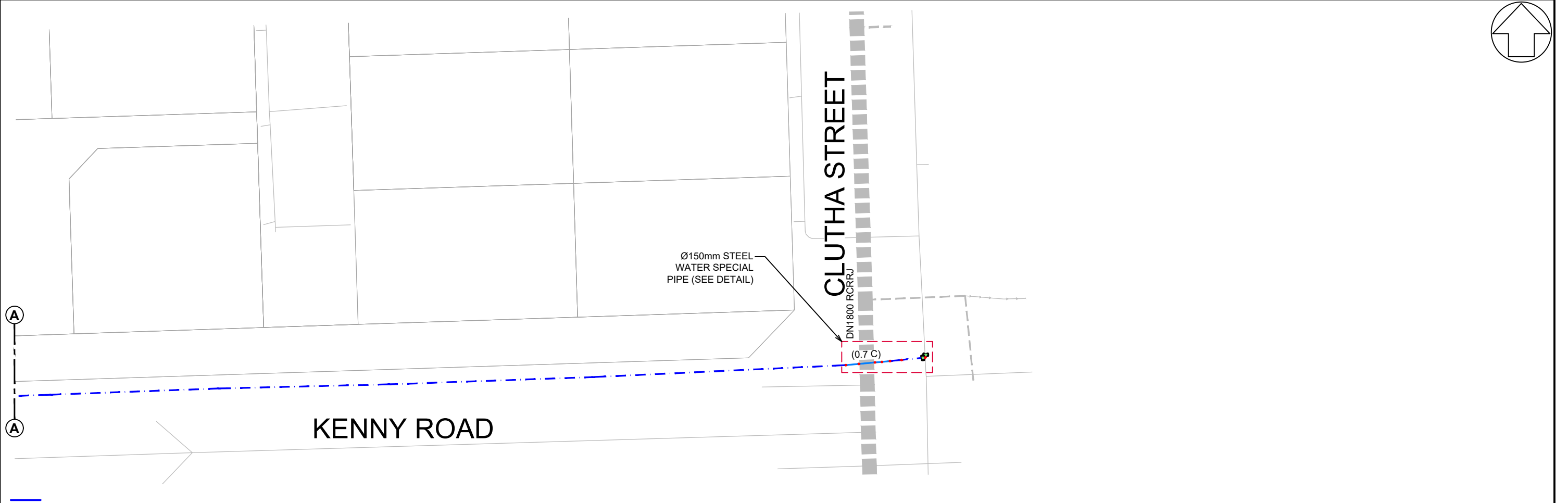
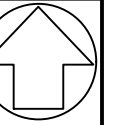
stratagroup
 CONSULTING ENGINEERS
 P 06 876 7646
 F 06 876 7645
 www.stratagroup.net.nz
 PO BOX 758
 Business HQ
 1/308 Queen Street East
 Hastings, New Zealand
 Structural Fire Civil Project Management

CLIENT: GREENSTONE LAND DEVELOPMENT LTD

PROJECT: TE AWA - KENNY ROAD

TITLE: AS-BUILT WATER LAYOUT

DESIGNED MC	0 2.5 5 10 15
DRAWN MC	A1 1:250 ; A3 1:500
CHECKED DJ	Scale (m)
DATE 26/6/19	
PROJECT NO. J5174	SHEET AB040
	REVISION: 5



WATERMAIN SPECIAL PIPE DETAIL

- WATER PIPE NETWORK:**
- DN150 PE WATERMAIN
 - DN63 PE80 PN12.5 SDR13.6 WATER RIDER MAIN
 - DN20 PE80 PN12.5 WATER SERVICE CONNECTION PIPES
 - JUNCTION J01: DN150 X DN100 DI FLANGED TEE
 - JUNCTIONS J04 - J05: DN100 DI 45° BEND SO-SO
 - JUNCTION J03: DN150 X DN150 DI FLANGED TEE
 - ALL VALVES ARE DUCTILE IRON
 - ALL HYDRANTS ARE DUCTILE IRON
 - ALL WATER SERVICE CONNECTION TERMINALS ARE NCC STANDARD MANIFOLDS

SURVEY DATUM: NZGD2000, HAWKES BAY CIRCUIT
 HEIGHT DATUM: HAWKES BAY LOCAL AUTHORITY DATUM 1972 (NAPIER VERTICAL DATUM 1962 +10m) AND NCC 2014 BENCHMARK NETWORK
 HEIGHT ORIGIN: BOLT 10, GEODETIC CODE: EVQ6, RL=11.208m, SOURCE: LINZ

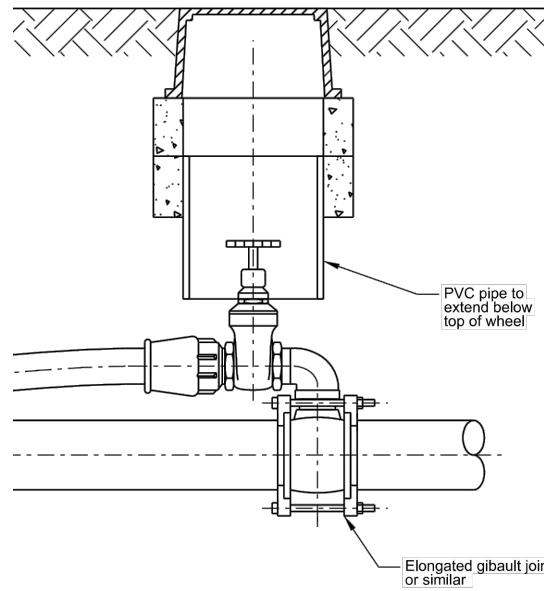
REV	REASON FOR ISSUE	DATE	BY
1	AS-BUILT PLAN	28/10/21	MC

stratagroup
 CONSULTING ENGINEERS
 P 06 876 7646 PO BOX 758
 F 06 876 7645 Business HQ
 www.stratagroup.net.nz 1/308 Queen Street East
 Hastings, New Zealand
 Structural Fire Civil Project Management

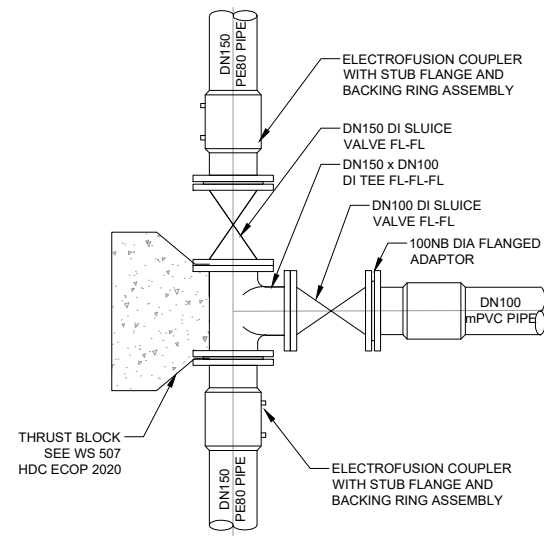
CLIENT: GREENSTONE LAND DEVELOPMENT LTD
 PROJECT: TE AWA - KENNY ROAD

TITLE: AS-BUILT WATER MAIN SPECIAL STEEL PIPE

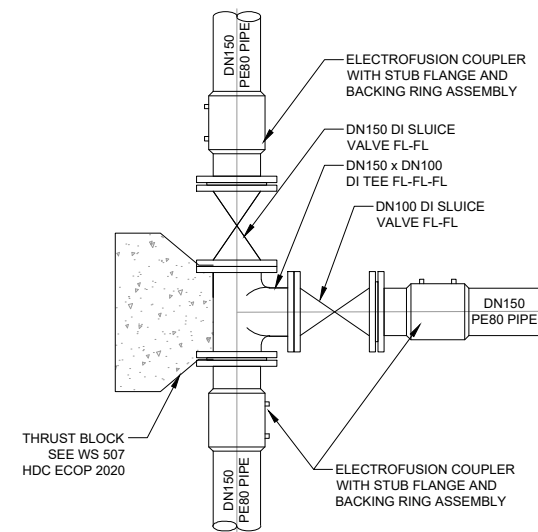
DESIGNED MC	0 2.5 5 10 15
DRAWN MC	A1 1:250 ; A3 1:500
CHECKED DJ	Scale (m)
DATE 26/6/19	
PROJECT NO. J5174	SHEET AB041
	REVISION: 1



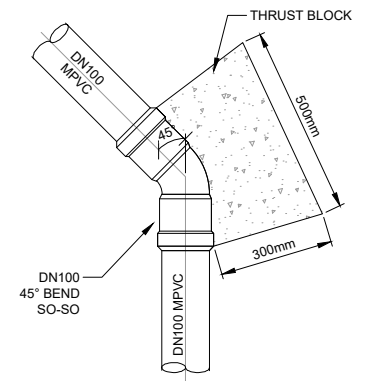
DETAIL J02, GV03 & GV06 - GATE VALVE AND CONNECTION OF RIDER MAIN TO PRINCIPAL MAIN



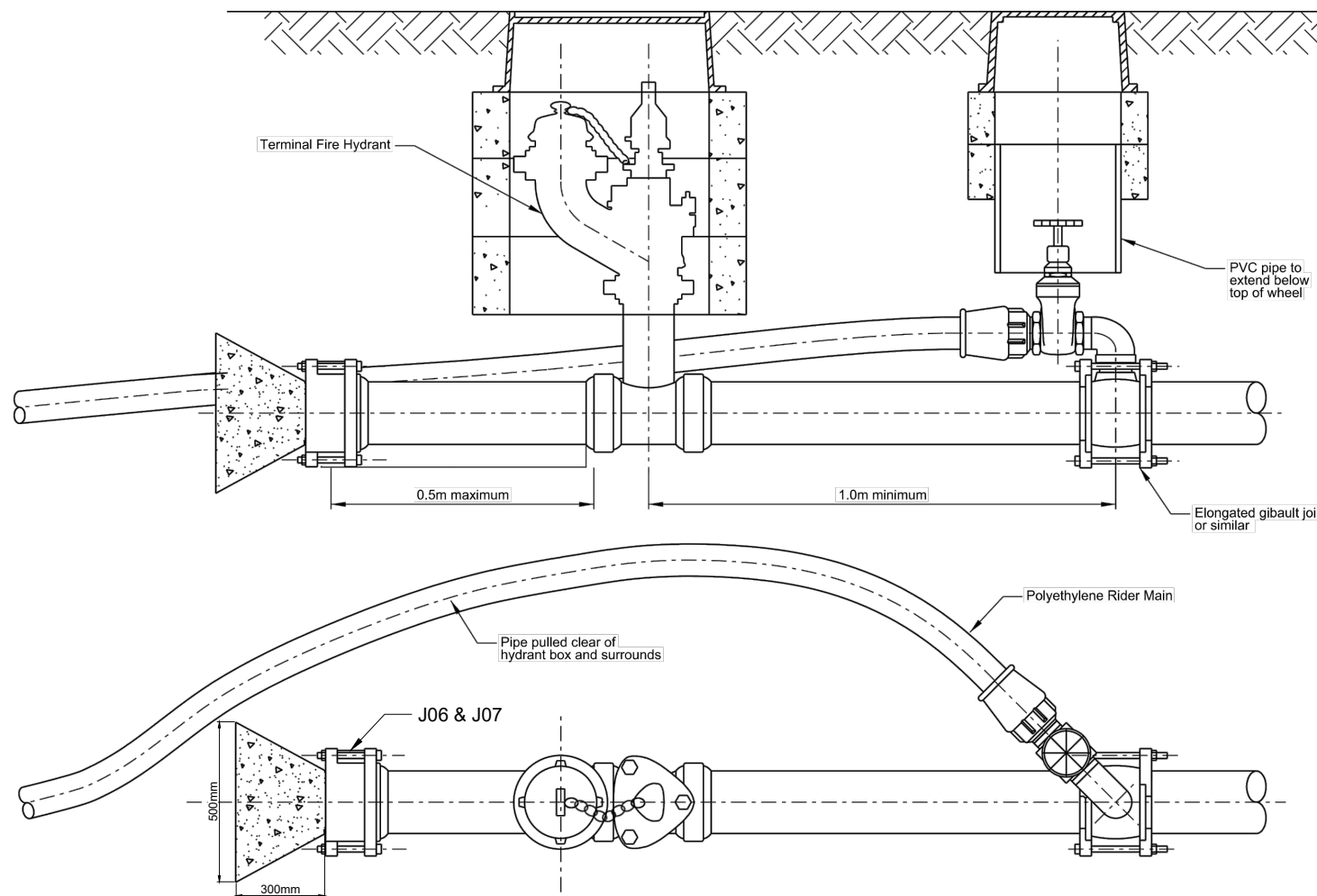
DETAIL J01 - DI DN150 x DN100 TEE



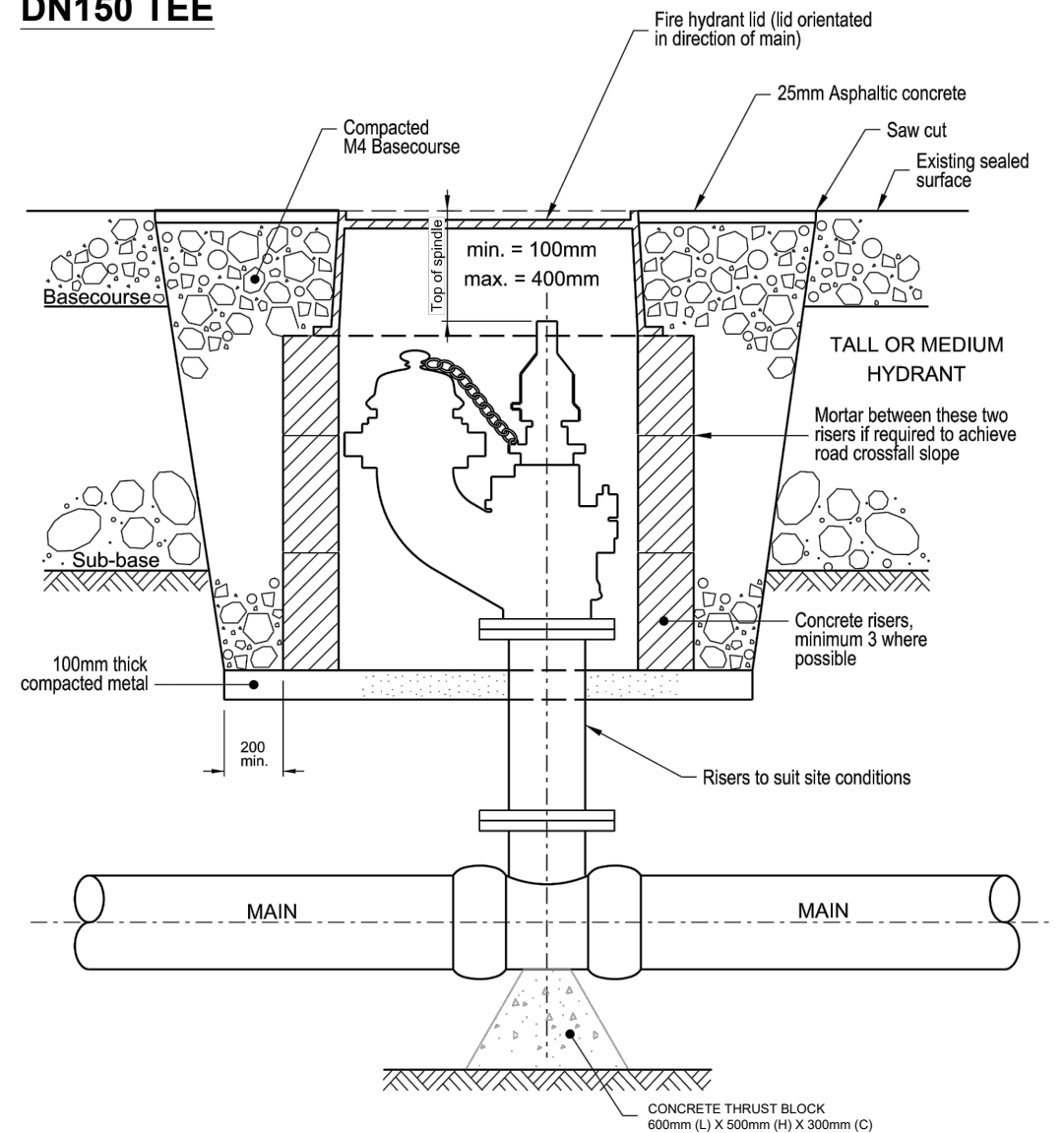
DETAIL J03 - DI DN150 TEE



DETAIL J04 & J05 - DI 45° BEND



DETAIL FH02 AND GV06 - TERMINATING FIRE HYDRANT



DETAIL FH01 - FIRE HYDRANT

REV	REASON FOR ISSUE	DATE	BY
5	AS-BUILT PLAN	25/08/21	MC
4	RFI ENGINEERING APPROVAL	16/06/20	MC
3	RFI ENGINEERING APPROVAL	12/05/20	MC
2	FOR ENGINEERING APPROVAL	13/02/20	MC
1	FOR RESOURCE CONSENT	11/1/19	MC

stratagroup
CONSULTING ENGINEERS

P 06 876 7646
F 06 876 7645
www.stratagroup.net.nz

PO BOX 758
Business HQ
1/308 Queen Street East
Hastings, New Zealand

Structural Fire Civil Project Management

CLIENT: GREENSTONE LAND DEVELOPMENT LTD

PROJECT: TE AWA - KENNY ROAD

TITLE: AS-BUILT WATER DETAILS

DESIGNED MC	NOT TO SCALE	
DRAWN MC		
CHECKED DJ		
DATE 26/6/19		
PROJECT NO. J5174	SHEET: AB042	REVISION: 5