

LYNDHURST ROAD SUBDIVISION - STAGE 9





**GREENSTONE LAND
DEVELOPMENT LTD
PROJECT NO. J4963
FOR AS-BUILT**

| DRAWING SHEET LIST | | |
|--------------------|---|-----|
| SHEET NO. | SHEET NAME | REV |
| AB-000 | COVER | |
| AB-001 | AS-BUILT CONTOUR PLAN | 1 |
| AB-002 | ROADING AND ROAD FEATURES AS-BUILT PLAN | 1 |
| AB-003 | SEWER AS-BUILT PLAN | 1 |
| AB-004 | SEWER AS-BUILT LONG-SECTION | 1 |
| AB-005 | STORMWATER AS-BUILT PLAN | 1 |
| AB-006 | STORMWATER AS-BUILT LONG-SECTION | 1 |
| AB-007 | WATER AS-BUILT PLAN | 1 |



NOTES: ALL LOTS TO BE FORMED TO A MINIMUM OF RL:19.80

KEY:

-  - PRIMARY FLOW PATH
-  - PRIMARY FLOW PATH
-  - MAJOR CONTOURS
-  - MINOR CONTOURS

SAFETY IN DESIGN
 ALL REASONABLY PRACTICABLE STEPS HAVE BEEN TAKEN TO ENSURE SAFETY IN DESIGN HAS BEEN CONSIDERED WITHIN STRATA GROUPS SCOPE OF WORK FOR THIS DESIGN IN ACCORDANCE WITH IPENZ PRACTICE NOTE 07 "DESIGN FOR SAFETY IN BUILDINGS AND OTHER STRUCTURES (JULY 2006)". IT REMAINS THE RESPONSIBILITY OF THE OWNER AND/OR OPERATOR TO ENSURE APPROPRIATE PRACTICES ARE IN PLACE TO PROTECT THE SAFETY OF THE WORKERS AND THE PUBLIC IN THE OPERATION OF THE FACILITY.

| REV | FOR AS-BUILT | DATE | BY |
|-----|------------------|----------|----|
| 1 | FOR AS-BUILT | 09/08/19 | LZ |
| | REASON FOR ISSUE | | |

THE CONTRACTOR IS TO BE AWARE OF ALL INSPECTIONS TO BE MADE BY THE ENGINEER AS A REQUIREMENT OF THE PRODUCER STATEMENT PSA CONSTRUCTION REVIEW DOCUMENTATION. THE ENGINEER WILL REQUIRE 24 HOURS PRIOR NOTIFICATION WHEN ALL STRUCTURAL ELEMENTS ARE READY TO BE INSPECTED.

stratagroup
 CONSULTING ENGINEERS
 P 06 876 7646
 F 06 876 7645
 www.stratagroup.net.nz
 PO BOX 758
 Business HQ
 1/308 Queen Street East
 Hastings, New Zealand
 Structural Fire Civil Project Management

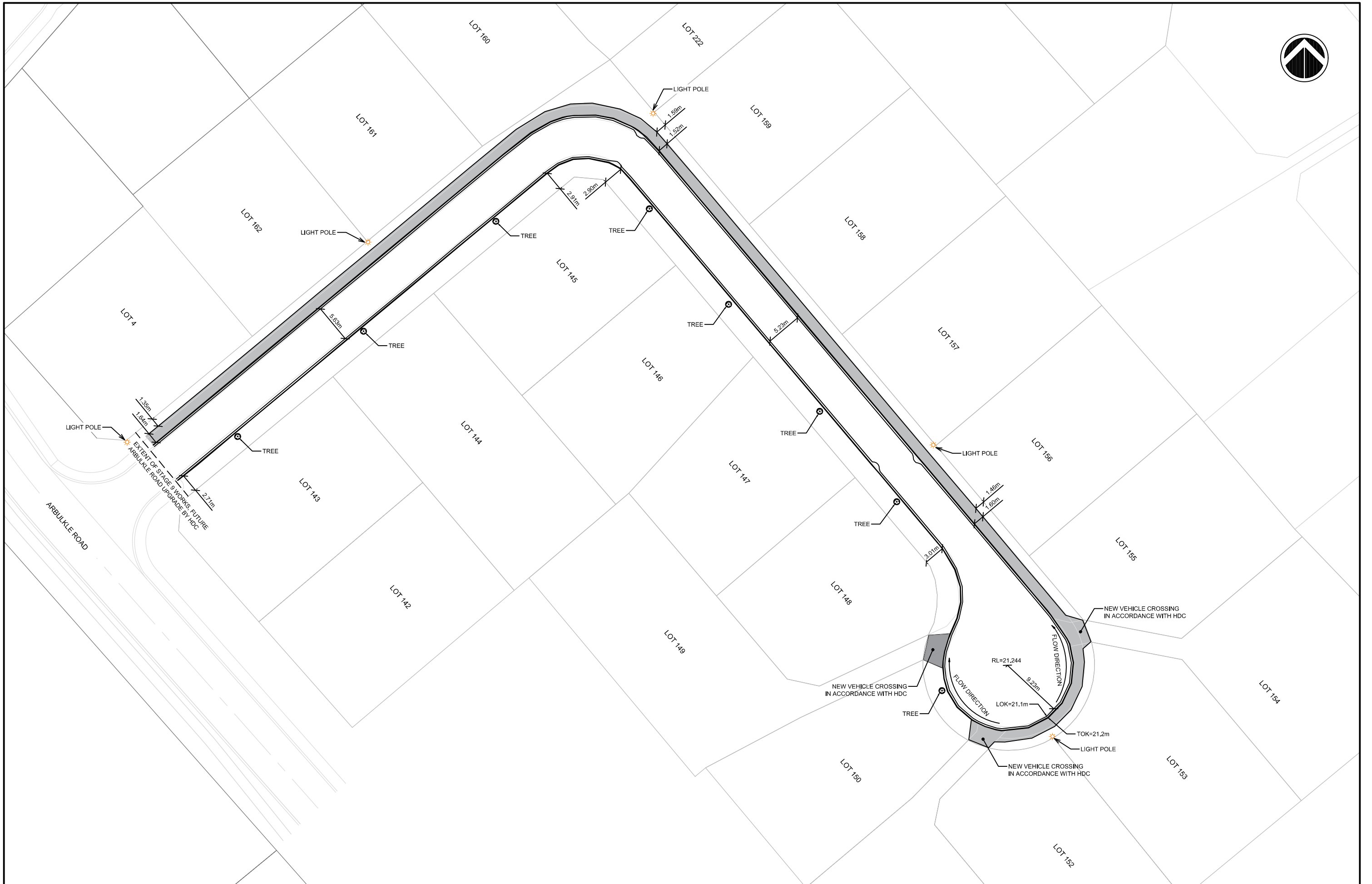
CLIENT:

Greenstone
 LAND DEVELOPMENTS

PROJECT:
LYNDHURST ARBUCKLE SUBDIVISION - STAGE 9
 LYNDHURST ROAD
 HASTINGS

TITLE:
AS-BUILT CONTOUR PLAN
 This drawing and its contents are the property of Strata Group Consulting Engineers Ltd. Any unauthorized employment or reproduction in full or part is forbidden.

| | |
|-------------------|---|
| DESIGNED LZ | 0 2.5 5 10 15 Full Size 1:250 ; Half Size 1:500 Scale (m) |
| DRAWN LZ | |
| CHECKED DJ | |
| DATE AUG 18 | |
| PROJECT NO. J4693 | SHEET AB-001 |
| | REVISION: 1 |



SAFETY IN DESIGN

ALL REASONABLY PRACTICABLE STEPS HAVE BEEN TAKEN TO ENSURE SAFETY IN DESIGN HAS BEEN CONSIDERED WITHIN STRATA GROUP'S SCOPE OF WORK FOR THIS DESIGN IN ACCORDANCE WITH PEENZ PRACTICE NOTE OF "DESIGN FOR SAFETY IN BUILDINGS AND OTHER STRUCTURES (JULY 2008)". IT REMAINS THE RESPONSIBILITY OF THE OWNER AND/OR OPERATOR TO ENSURE APPROPRIATE PRACTICES ARE IN PLACE TO PROTECT THE SAFETY OF THE WORKERS AND THE PUBLIC IN THE OPERATION OF THE FACILITY.

| REV | FOR AS-BUILT | DATE | BY |
|-----|------------------|----------|----|
| 1 | FOR AS-BUILT | 29/08/19 | LZ |
| | REASON FOR ISSUE | | |

| DESIGNED | LZ |
|----------|----------|
| DRAWN | LZ |
| CHECKED | DJ |
| DATE | 09/08/19 |

THE CONTRACTOR IS TO BE AWARE OF ALL INSPECTIONS TO BE MADE BY THE ENGINEER AS A REQUIREMENT OF THE PRODUCER STATEMENT PS4 CONSTRUCTION REVIEW DOCUMENTATION. THE ENGINEER WILL REQUIRE 24 HOURS PRIOR NOTIFICATION FOR ALL INSPECTIONS.

stratagroup
CONSULTING ENGINEERS

P 06 876 7646
F 06 876 7645
www.stratagroup.net.nz

PO BOX 758
Business HQ
1/308 Queen Street East
Hastings, New Zealand
Civil Project Management

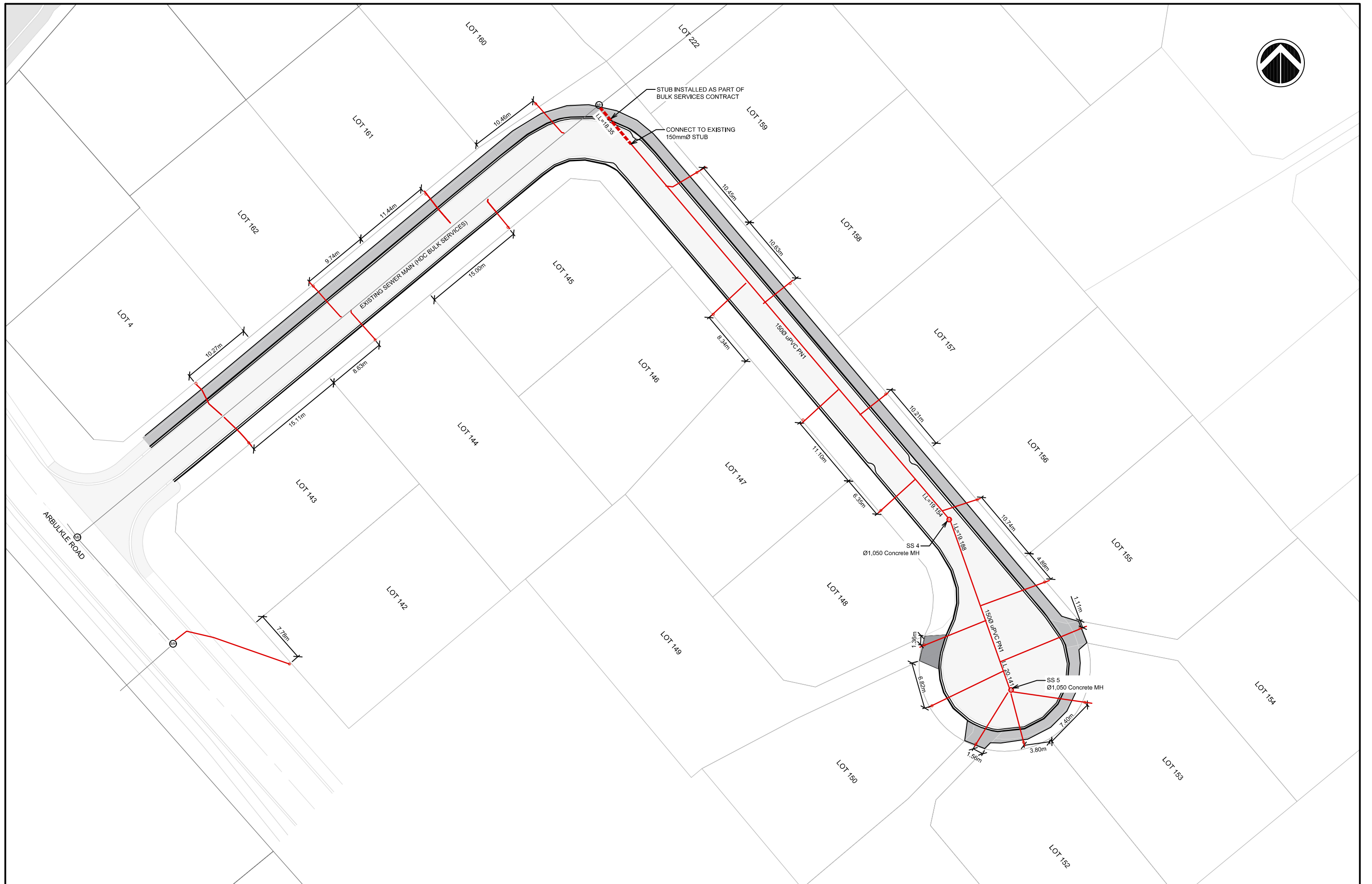
CLIENT: GREENSTONE LAND DEVELOPMENTS LTD

PROJECT: ARATAKI ROAD SUBDIVISION

TITLE: ROADING AND ROAD FEATURES AS-BUILT PLAN

| | | | |
|-------------|----------|--|-----------|
| DESIGNED | LZ | <p>Full Size 1:250 ; Half Size 1:500 Scale (m)</p> | |
| DRAWN | LZ | | |
| CHECKED | DJ | | |
| DATE | 09/08/19 | | |
| PROJECT NO. | J4740 | SHEET: | REVISION: |
| | | AB-002 | 1 |

This drawing and its contents are the property of Strata Group Consulting Engineers Ltd. Any unauthorized employment or reproduction in full or part is forbidden.



SAFETY IN DESIGN

ALL REASONABLY PRACTICABLE STEPS HAVE BEEN TAKEN TO ENSURE SAFETY IN DESIGN HAS BEEN CONSIDERED WITHIN STRATA GROUP'S SCOPE OF WORK FOR THIS DESIGN IN ACCORDANCE WITH PENZ PRACTICE NOTE OF 'DESIGN FOR SAFETY IN BUILDINGS AND OTHER STRUCTURES (JULY 2008)'. IT REMAINS THE RESPONSIBILITY OF THE OWNER AND/OR OPERATOR TO ENSURE APPROPRIATE PRACTICES ARE IN PLACE TO PROTECT THE SAFETY OF THE WORKERS AND THE PUBLIC IN THE OPERATION OF THE FACILITY.

| REV | FOR AS-BUILT | DATE | BY |
|-----|------------------|----------|----|
| 1 | FOR AS-BUILT | 29/08/19 | LZ |
| | REASON FOR ISSUE | DATE | BY |

THE CONTRACTOR IS TO BE AWARE OF ALL INSPECTIONS TO BE MADE BY THE ENGINEER AS A REQUIREMENT OF THE PRODUCER STATEMENT PS4 CONSTRUCTION REVIEW DOCUMENTATION. THE ENGINEER WILL REQUIRE 24 HOURS PRIOR NOTIFICATION FOR ALL INSPECTIONS.

stratagroup
CONSULTING ENGINEERS

P 06 876 7646
F 06 876 7645
www.stratagroup.net.nz

PO BOX 758
Business HQ
1/308 Queen Street East
Hastings, New Zealand
Civil Project Management

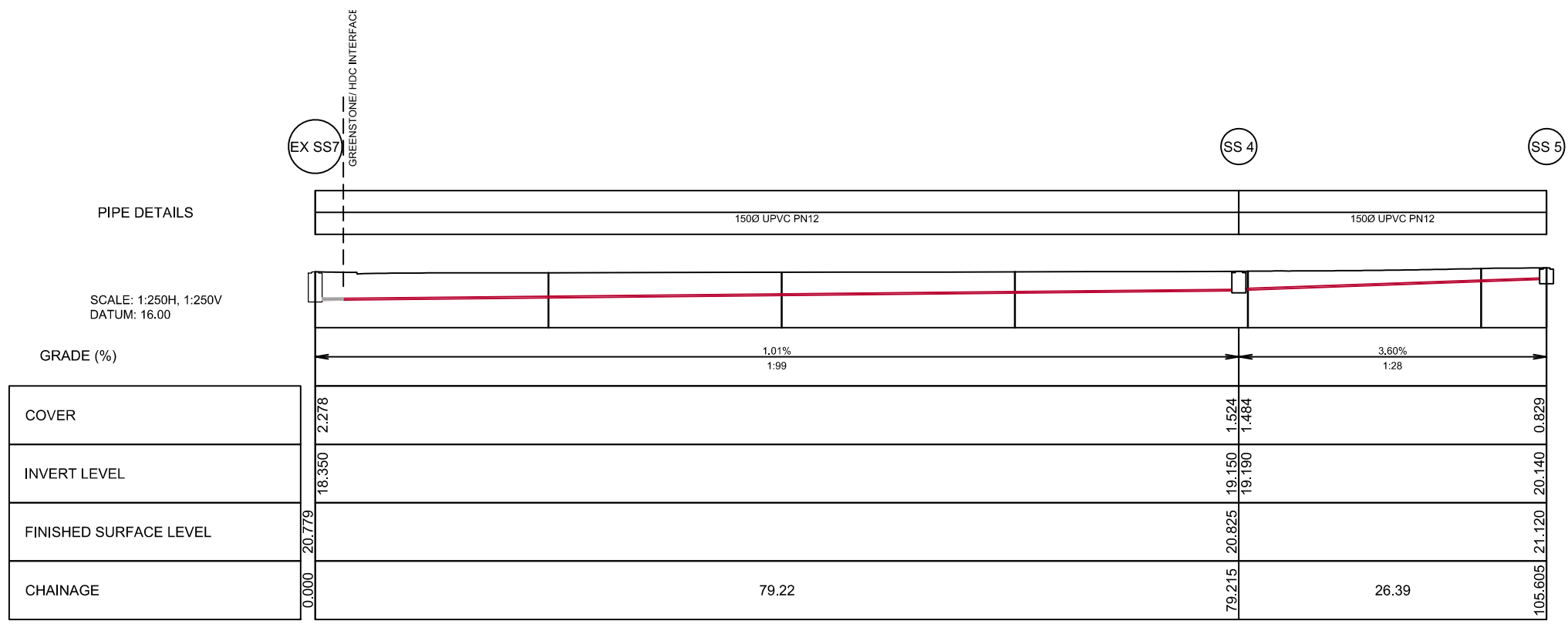
CLIENT: GREENSTONE LAND DEVELOPMENTS LTD

PROJECT: ARATAKI ROAD SUBDIVISION

TITLE: SEWER AS-BUILT PLAN

This drawing and its contents are the property of Strata Group Consulting Engineers Ltd. Any unauthorized employment or reproduction in full or part is forbidden.

| | |
|-------------------|-----------------------------------|
| DESIGNED LZ | 0 2.5 5 10 15 |
| DRAWN LZ | Full Size 1:250 ; Half Size 1:500 |
| CHECKED DJ | Scale (m) |
| DATE 09/08/19 | |
| PROJECT NO. J4740 | SHEET AB-003 |
| | REVISION: 1 |



SEWER STAGE 9 LONG SECTION

SAFETY IN DESIGN
 ALL REASONABLY PRACTICABLE STEPS HAVE BEEN TAKEN TO ENSURE SAFETY IN DESIGN HAS BEEN CONSIDERED WITHIN STRATA GROUP'S SCOPE OF WORK FOR THIS DESIGN IN ACCORDANCE WITH PENZ PRACTICE NOTE 07 'DESIGN FOR SAFETY IN BUILDINGS AND OTHER STRUCTURES (JULY 2008)'. IT REMAINS THE RESPONSIBILITY OF THE OWNER AND/OR OPERATOR TO ENSURE APPROPRIATE PRACTICES ARE IN PLACE TO PROTECT THE SAFETY OF THE WORKERS AND THE PUBLIC IN THE OPERATION OF THE FACILITY.

| REV | REASON FOR ISSUE | DATE | BY |
|-----|------------------|----------|----|
| 1 | FOR AS-BUILT | 29/08/19 | LZ |

THE CONTRACTOR IS TO BE AWARE OF ALL INSPECTIONS TO BE MADE BY THE ENGINEER AS A REQUIREMENT OF THE PRODUCER STATEMENT PSA CONSTRUCTION REVIEW DOCUMENTATION. THE ENGINEER WILL REQUIRE 24 HOURS PRIOR NOTIFICATION WHEN ALL STRUCTURAL ELEMENTS ARE READY TO BE INSPECTED.

stratagroup
 CONSULTING ENGINEERS
 P 06 876 7646 PO BOX 758
 F 06 876 7645 Business HQ
 www.stratagroup.net.nz 1/308 Queen Street East
 Hastings, New Zealand
 Structural Fire Civil Project Management

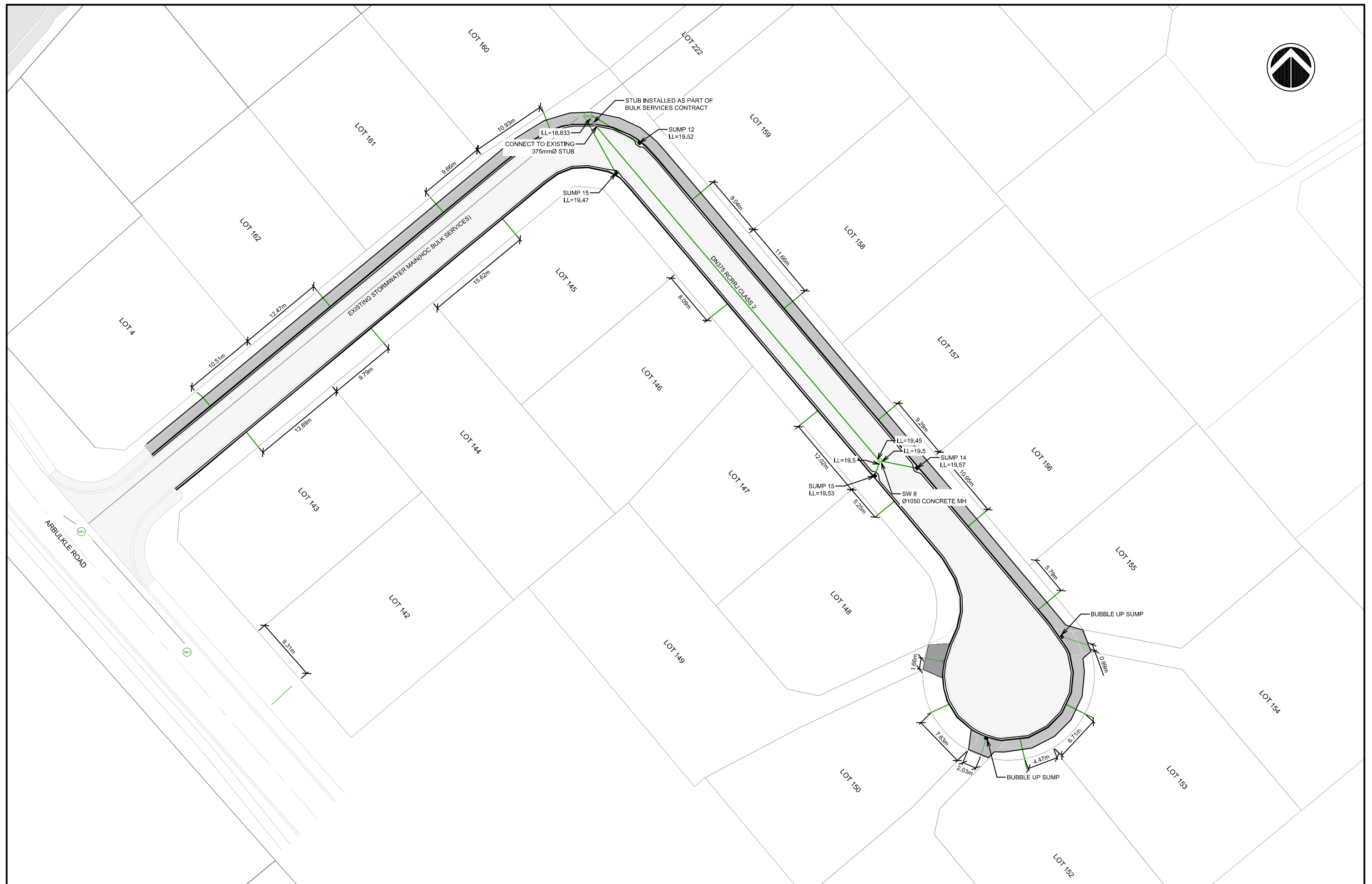
CLIENT:

Greenstone
 LAND DEVELOPMENTS

PROJECT: **LYNDHURST ARBUCKLE SUBDIVISION - STAGE 9**
 LYNDHURST ROAD
 HASTINGS

TITLE: **SEWER LONGSECTION AS-BULT PLAN**
 This drawing and its contents are the property of Strata Group Consulting Engineers Ltd. Any unauthorized employment or reproduction in full or part is forbidden.

| | |
|--------------------|-----------------------------------|
| DESIGNED DJ | 0 2.5 5 10 15 |
| DRAWN LZ | Full Size 1:250 ; Half Size 1:500 |
| CHECKED DJ | Scale (m) |
| DATE AUG 19 | |
| PROJECT NO.: J4693 | SHEET: AB-004 |
| | REVISION: 1 |



SAFETY IN DESIGN

ALL REASONABLY PRACTICABLE STEPS HAVE BEEN TAKEN TO ENSURE SAFETY IN DESIGN HAS BEEN CONSIDERED WITHIN STRATA GROUP'S SCOPE OF WORK FOR THIS DESIGN IN ACCORDANCE WITH PENZ PRACTICE NOTE OF 'DESIGN FOR SAFETY IN BUILDINGS AND OTHER STRUCTURES (JULY 2008)'. IT REMAINS THE RESPONSIBILITY OF THE OWNER AND/OR OPERATOR TO ENSURE APPROPRIATE PRACTICES ARE IN PLACE TO PROTECT THE SAFETY OF THE WORKERS AND THE PUBLIC IN THE OPERATION OF THE FACILITY.

| REV | FOR AS-BUILT | DATE | BY |
|-----|------------------|----------|----|
| 1 | | 29/08/19 | LZ |
| | REASON FOR ISSUE | DATE | BY |

| | |
|-------------|----------|
| DESIGNED | LZ |
| DRAWN | LZ |
| CHECKED | DJ |
| DATE | 09/08/19 |
| PROJECT NO. | J4740 |
| SHEET | AB-005 |
| REVISION | 1 |

THE CONTRACTOR IS TO BE AWARE OF ALL INSPECTIONS TO BE MADE BY THE ENGINEER AS A REQUIREMENT OF THE PRODUCER STATEMENT PS4 CONSTRUCTION REVIEW DOCUMENTATION. THE ENGINEER WILL REQUIRE 24 HOURS PRIOR NOTIFICATION FOR ALL INSPECTIONS.

stratagroup
CONSULTING ENGINEERS

P 06 876 7646
F 06 876 7645
www.stratagroup.net.nz

PO BOX 758
Business HQ
1/308 Queen Street East
Hastings, New Zealand
Civil Project Management

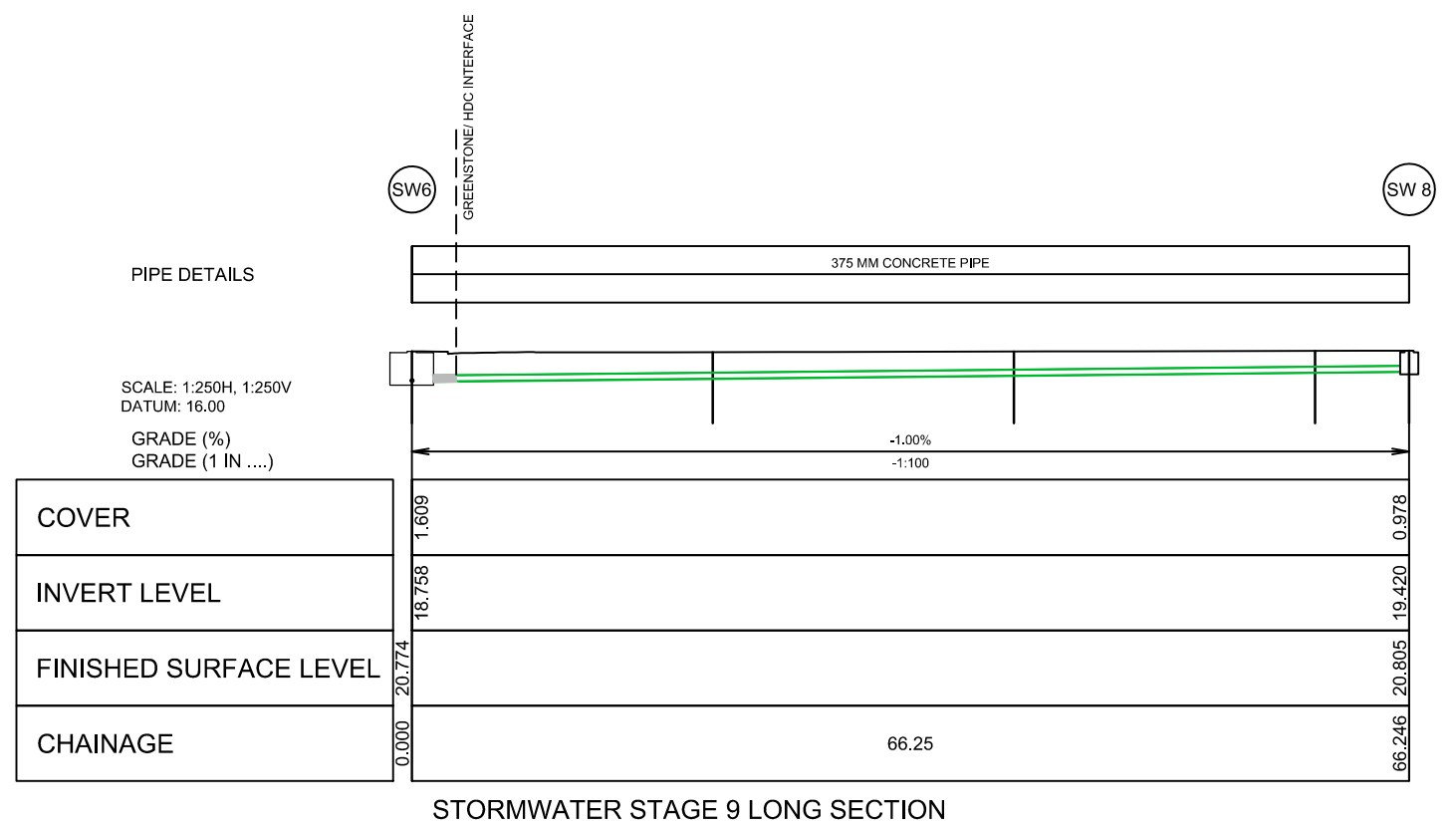
CLIENT: GREENSTONE LAND DEVELOPMENTS LTD

PROJECT: ARATAKI ROAD SUBDIVISION

TITLE: STORMWATER ASBUILT PLAN

This drawing and its contents are the property of Strata Group Consulting Engineers Ltd. Any unauthorized employment or reproduction in full or part is forbidden.

| | | |
|-------------|----------|---|
| DESIGNED | LZ | 0 2.5 5 10 15 Full Size 1:250 ; Half Size 1:500 Scale (m) |
| DRAWN | LZ | |
| CHECKED | DJ | |
| DATE | 09/08/19 | |
| PROJECT NO. | J4740 | REVISION: |
| SHEET: | AB-005 | 1 |



SAFETY IN DESIGN
 ALL REASONABLY PRACTICABLE STEPS HAVE BEEN TAKEN TO ENSURE SAFETY IN DESIGN HAS BEEN CONSIDERED WITHIN STRATA GROUP'S SCOPE OF WORK FOR THIS DESIGN IN ACCORDANCE WITH PENZ PRACTICE NOTE 07 'DESIGN FOR SAFETY IN BUILDINGS AND OTHER STRUCTURES (JULY 2006)'. IT REMAINS THE RESPONSIBILITY OF THE OWNER AND/OR OPERATOR TO ENSURE APPROPRIATE PRACTICES ARE IN PLACE TO PROTECT THE SAFETY OF THE WORKERS AND THE PUBLIC IN THE OPERATION OF THE FACILITY.

| REV | REASON FOR ISSUE | DATE | BY |
|-----|------------------|----------|----|
| 1 | FOR AS-BUILT | 09/08/19 | LZ |

THE CONTRACTOR IS TO BE AWARE OF ALL INSPECTIONS TO BE MADE BY THE ENGINEER AS A REQUIREMENT OF THE PRODUCER STATEMENT PS4 CONSTRUCTION REVIEW DOCUMENTATION. THE ENGINEER WILL REQUIRE 24 HOURS PRIOR NOTIFICATION WHEN ALL STRUCTURAL ELEMENTS ARE READY TO BE INSPECTED.

stratagroup
 CONSULTING ENGINEERS

P 06 876 7646
 F 06 876 7645
 www.stratagroup.net.nz

PO BOX 758
 Business HQ
 1/308 Queen Street East
 Hastings, New Zealand

Structural Fire Civil Project Management

CLIENT:

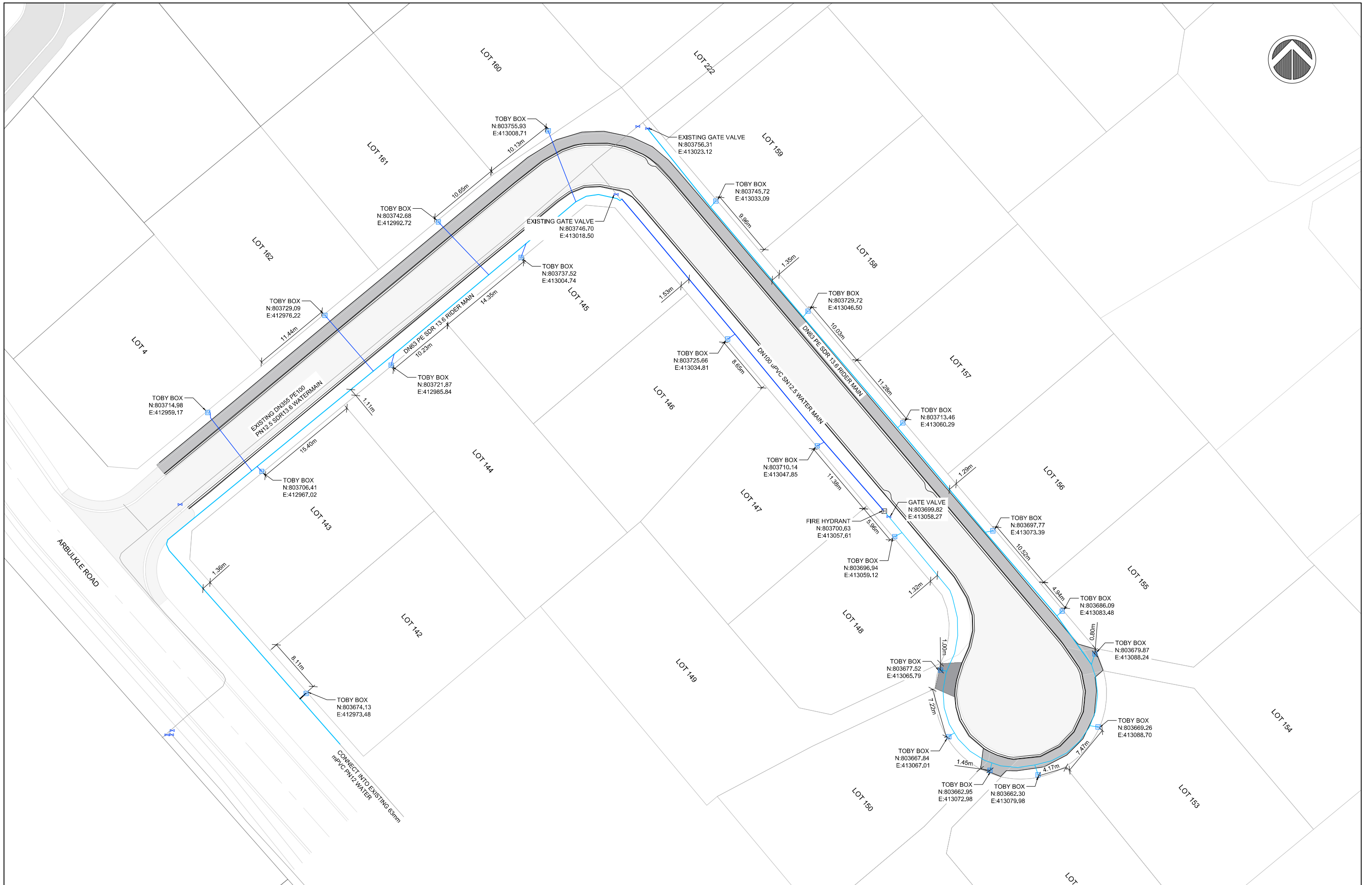
Greenstone
 LAND DEVELOPMENTS

PROJECT: LYNDHURST ARBUCKLE SUBDIVISION - STAGE 9
 LYNDHURST ROAD
 HASTINGS

TITLE: STORMWATER LONG SECTION ASBULT

This drawing and its contents are the property of Strata Group Consulting Engineers Ltd. Any unauthorized employment or reproduction in full or part is forbidden.

| | |
|--------------------|-----------------------------------|
| DESIGNED DJ | 0 2.5 5 10 15 |
| DRAWN LZ | Full Size 1:250 ; Half Size 1:500 |
| CHECKED DJ | Scale (m) |
| DATE AUG 19 | |
| PROJECT NO.: J4693 | SHEET: AB-006 |
| | REVISION: 1 |



SAFETY IN DESIGN

ALL REASONABLY PRACTICABLE STEPS HAVE BEEN TAKEN TO ENSURE SAFETY IN DESIGN HAS BEEN CONSIDERED WITHIN STRATA GROUPS SCOPE OF WORK FOR THIS DESIGN IN ACCORDANCE WITH IPENZ PRACTICE NOTE 07 "DESIGN FOR SAFETY IN BUILDINGS AND OTHER STRUCTURES (JULY 2006)". IT REMAINS THE RESPONSIBILITY OF THE OWNER AND/OR OPERATOR TO ENSURE APPROPRIATE PRACTICES ARE IN PLACE TO PROTECT THE SAFETY OF THE WORKERS AND THE PUBLIC IN THE OPERATION OF THE FACILITY.

| REV | REASON FOR ISSUE | DATE | BY |
|-----|------------------|----------|----|
| 1 | FOR AS-BUILT | 09/08/19 | LZ |

THE CONTRACTOR IS TO BE AWARE OF ALL INSPECTIONS TO BE MADE BY THE ENGINEER AS A REQUIREMENT OF THE PRODUCER STATEMENT PS4 CONSTRUCTION REVIEW DOCUMENTATION. THE ENGINEER WILL REQUIRE 24 HOURS PRIOR NOTIFICATION FOR ALL INSPECTIONS.

stratagroup
CONSULTING ENGINEERS

P 06 876 7646
F 06 876 7645
www.stratagroup.net.nz

PO BOX 758
Business HQ
1/308 Queen Street East
Hastings, New Zealand
Civil Project Management

CLIENT: GREENSTONE LAND DEVELOPMENTS LTD

PROJECT: ARATAKI ROAD SUBDIVISION

TITLE: WATER AS-BUILT PLAN

This drawing and its contents are the property of Strata Group Consulting Engineers Ltd. Any unauthorized employment or reproduction in full or part is forbidden.

| | |
|--------------------|-----------------------------------|
| DESIGNED LZ | 0 2.5 5 10 15 |
| DRAWN LZ | Full Size 1:250 ; Half Size 1:500 |
| CHECKED DJ | Scale (m) |
| DATE 09/08/19 | |
| PROJECT NO.: J4740 | SHEET: AB-007 |
| | REVISION: 1 |